



PUMP STATIONS, BOBTAIL AND PLANT EQUIPMENT





“From our one location in 1983, we have grown to a top-notch company with six locations serving the Eastern US. These achievements could not have been possible without the support of our customers, vendors and employees. As we move forward, we remain steadfast in our commitment to excellence in customer service.”

Backorders

Items not shipped with your original order will be kept on order and shipped as soon as possible unless otherwise specified.

Freight

We ship UPS, FED-EX, USPS, and common carrier. Orders are shipped in the most economical manner. If you have a shipping preference, please indicate when placing your order. Freight terms are FOB origin unless otherwise agreed upon.

Quality

We adhere to strict quality control. Tarantin guarantees all items to be free of damage upon shipping. Freight damages must be addressed by the appropriate company handling your delivery.

Pump Station, Autogas, and Accessories..... 3

Pumps 11

Valves..... 17

Meters..... 24

Compressors 28

Cylinders and Storage Cabinets 30

Tank Anchoring..... 33

Cathodic Protection..... 34

Gauges & Dials 35

Tools and Accessories 37

Hose Assembly and Accessories 42

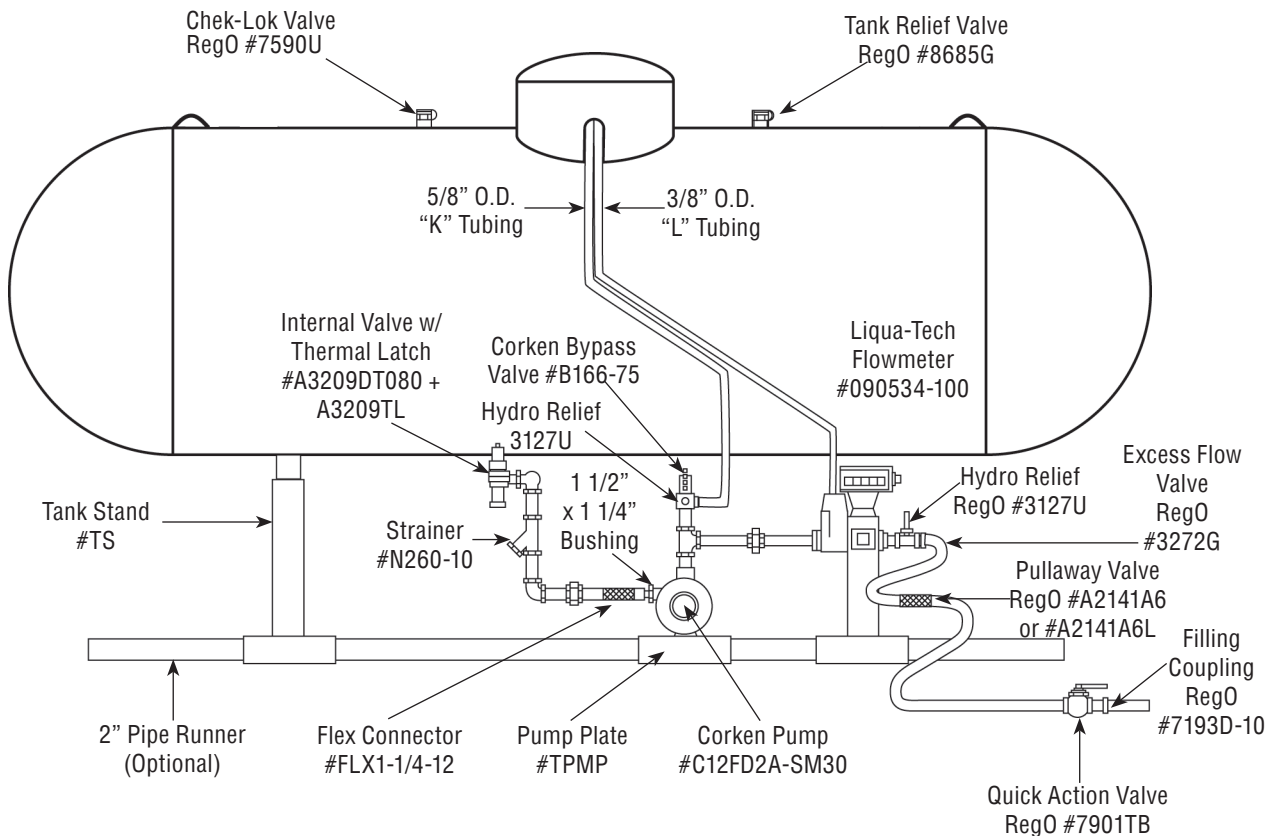
Signs and Decals 44

Carrier Tanks 45

Fittings 46

Download Our App
Order From Anywhere





GENERAL INFORMATION FOR PUMPING STATION DESIGN

- Choose the proper size tank for the operation, with a 1,000 gallon tank for a large industrial motor fueling or a 500 gallon tank for a small 20 lb. refilling.
- Always use a tank with a bottom withdrawal, preferably a new one. If a used tank is to be used, remove as many heavy ends as possible.
- Size the pump to the operation. Try to consider future expansion. If a meter is to be used, be sure to use a large enough pump, such as a Corken C12 or large C13.
- Couple the pump to an external by-pass, DO NOT rely on an internal by-pass on the pump.
- If a meter is to be used be sure it is designed for the operation. Use Liqua-Tech LPM102 or Liquid Controls MA4.
- Piping should be the same size as your pumps and meters, never smaller. Schedule 80 pipe and Type K copper tubing is required.
- Safety is a major consideration. Be sure a fire extinguisher and proper warnings and decals are used.



PUMP STATIONS, AUTOGAS, AND ACCESSORIES

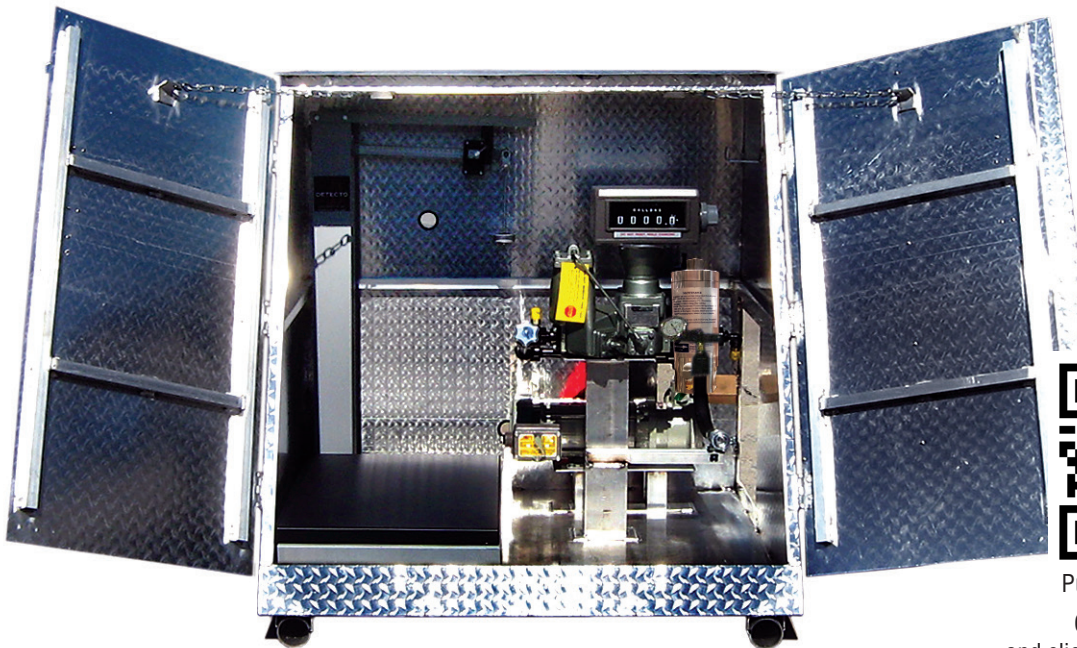
Aluminum Assembled Pump Station Cabinet

D2A-KIT-ALUM



Components Include:

- Cabinet
- Tank Stands (not pictured)
- Corken C12 Pump with Switch
- Bypass Valve
- Liqua-Tech Meter
- Scale (Do not install wheels if placed in cabinet)
- Piping Kit (Internal Valve 1/4", Hydrostatic Relief Valve, Angle Valve 3/4", Excess Flow Valve 3/4", Y Strainer, Flex Connector, Forged Steel Fittings, Schedule 80 Nipples, 3/4" Breakaway Coupling)



Pump Station Quote
 Go to our website
 and click "Pump Station Quote"
 or
 use the QR code
 and get your quote today.



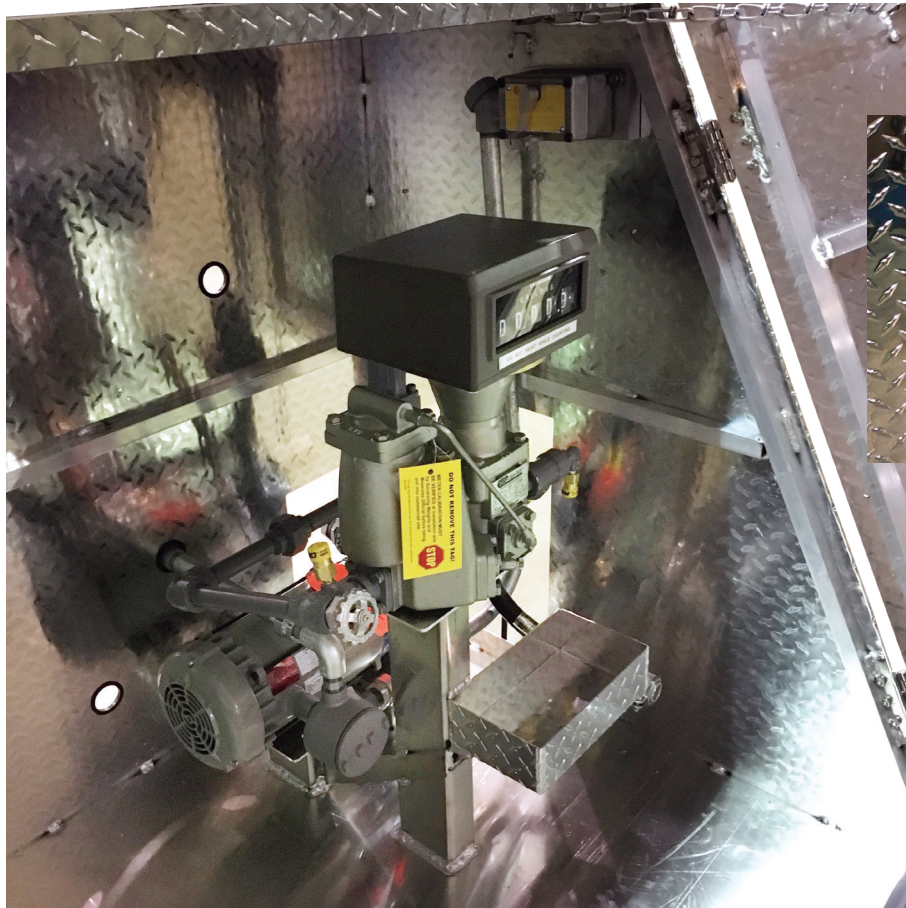
Aluminum Assembled Pump Station Cabinet - Electrical

D2A-KIT-ALUM-E

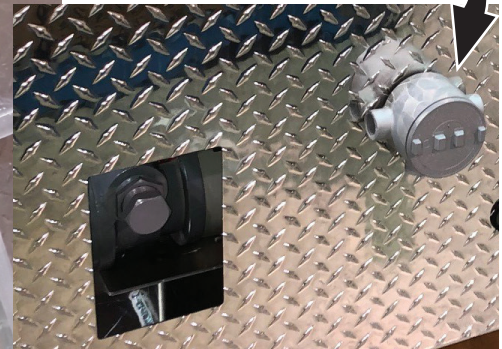


Components Include:

- Cabinet
- Pre-wired with Wall Mount Switch for 220V
- Exterior Junction Box for Electrical Connection
- Tank Stands (not pictured)
- Corken C12 Pump with Switch
- Bypass Valve
- Liqua-Tech Meter
- Scale (Do not install wheels if placed in cabinet)
- Piping Kit (Internal Valve 1/4", Hydrostatic Relief Valve, Angle Valve 3/4", Excess Flow Valve 3/4", Y Strainer, Flex Connector, Forged Steel Fittings, Schedule 80 Nipples, 3/4" Breakaway Coupling)



Features Prewired Switch For 220 Volt and Exterior Junction Box



Pump Station Quote

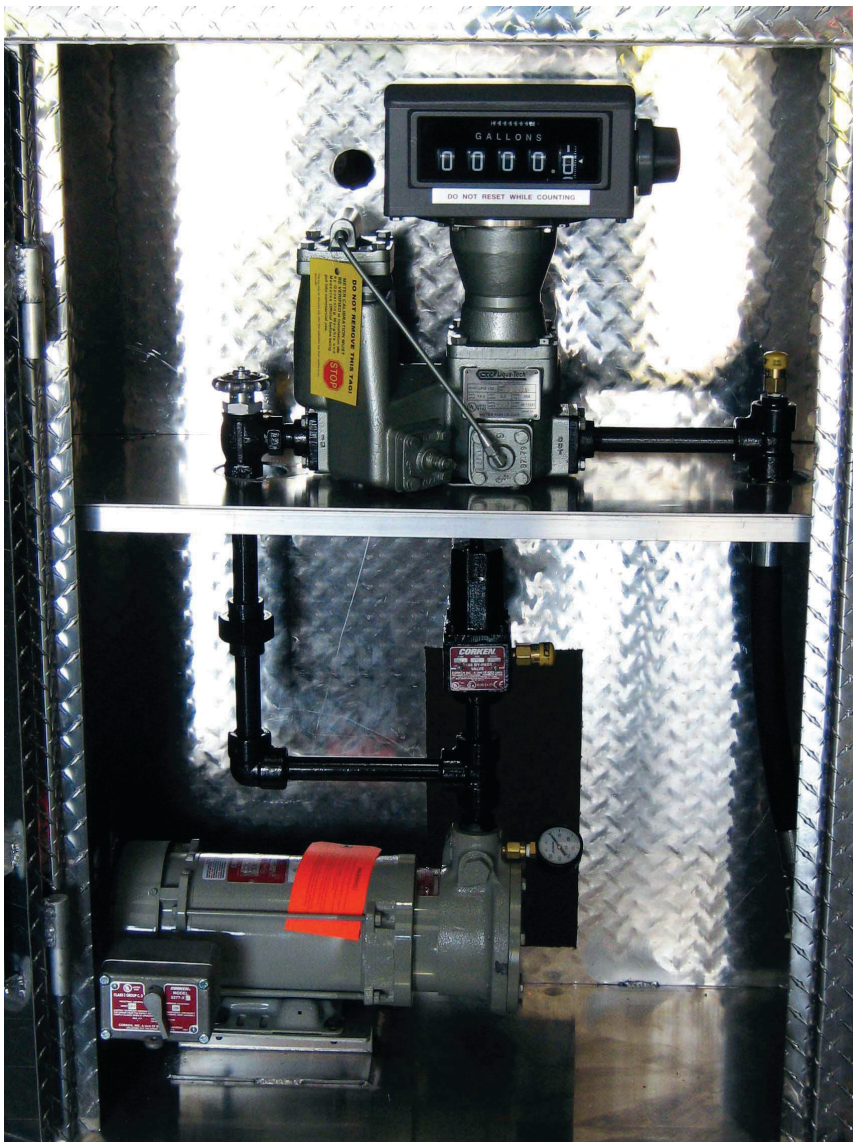
Go to our website
and click "Pump Station Quote"
or
use the QR code
and get your quote today.



PUMP STATIONS, AUTOGAS, AND ACCESSORIES

Aluminum Assembled Pump Station Compact Cabinet*

D1-KIT-ALUM



Corken pump shown.
Also available with a Smith Pump.



CLOSED VIEW

Components Include:

- Cabinet
- Tank Stands (not pictured)
- Corken C12 Pump with Switch
- Bypass Valve
- Lique-Tech Meter
- Piping Kit (Internal Valve 1/4", Hydrostatic Relief Valve, Angle Valve 3/4", Excess Flow Valve 3/4", Y Strainer, Flex Connector, Forged Steel Fittings, Schedule 80 Nipples)

*This compact Pump Station does not include a scale.

Propane AutoGas is domestically produced, safe for the environment, and affordably priced. Utilized in the school transportation industry since 1992, propane AutoGas retains its gas structure at normal atmospheric temperature and pressure. In turn, propane AutoGas does not spill, pool, or leave any residue. Propane AutoGas is safe, non-toxic, and non-poisonous.

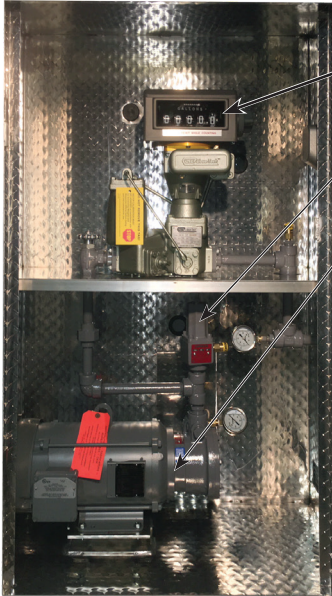
Pump Station Quote
Go to our website
and click "Pump Station Quote"
or
use the QR code below
and get your quote today.





Aluminum Assembled Autogas - Small Fleet

D1-KIT-ALUM-AUTOGAS-FILTER C16



Liqua-Tech 1" Mechanical Meter w/ATC
#090028-105

Corken B166 Bypass 100-225 psid
#B166-75CAU

Corken C16 Single Phase Pump
#C16MF6A

Need a Pump Station Quote?
Go to our website
and click "Pump Station Quote"
or
use the QR code below
and get your quote today.



Diamond Plate
Aluminum Cabinet
#D-1-ALUM



Optional:
Hose Retractor
with HoseBunn
#6102-1078P
and #PB-1394

Nozzle Boot
#NBGG
(optional)

CLOSED VIEW

Aluminum Assembled Autogas - Medium Fleet

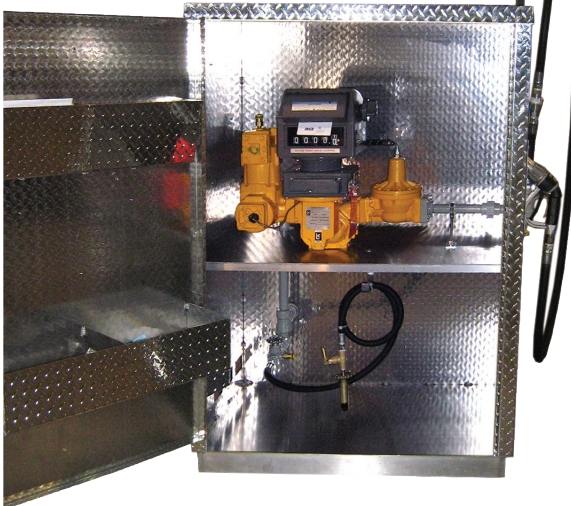
D3-MINI-SKID-KIT-AUTOGAS

Components Include:

- Aluminum D3 Cabinet
- Corken FF075 High Differential Pump & Bypass with 7.5hp 3ph Motor
- Flange Kit
- Liquid Controls MA5 Meter with ATC
- Veeder Root Mechanical Printing Register Head

- AutoGas Filter
- LG1E Dispensing Nozzle
- Hose Retractor and Hose Bunn with 3/4" Hose
- Auxillary 1/2" Cylinder Fill Hose (optional)

Pump Station Quote
Go to our website
and click "Pump Station Quote"
or
use the QR code below
and get your quote today.
and click "Pump Station Quote"



SIDE VIEW



CLOSED VIEW



PUMP STATIONS, AUTOGAS, AND ACCESSORIES



Hose Retractor with Bunn

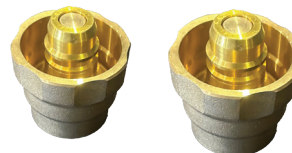
6102-1078P
Retractor Kit, vertical 78 inches
Includes box, post, bracket, foot,
and hardware

PB-1394
Hose Clamp
1-1/8" O.D. x 3/4" I.D.

66-1327
Fill Valve for ZVG2-T

CAV 16-0330
Adapter. Female Euro x Male 1-3/4" in ACME

CAV 16-0331
Adapter. Male Euro x Male 1-3/4" in ACME



CAV 16-0330 CAV 16-0331

Fueling Nozzle



Designed for LP-Gas fueling stations, the LP-Gas fueling nozzle provides a fast flow rate and low emission on disconnect. The fueling nozzle only allows gas to flow when it is correctly coupled, no opening is possible when misaligned.



NB-GG

Detecto Portable Platform Scales

854F100P

Wheels: 5" diameter, Heavy Duty
Rubolene

Shipping Weight: 132lbs.

Max Capacity:
1000lbs.

Front of Beam:
100lbs. x 0.5lbs.

Platform
Dimensions: 19" h
x 28" w

Overall
Dimensions: 45" h
x 24" w x 35" d



(Do not install wheels if placed in cabinet)

Tank Stands

TS
Tank Stand Pair with Meter Plate

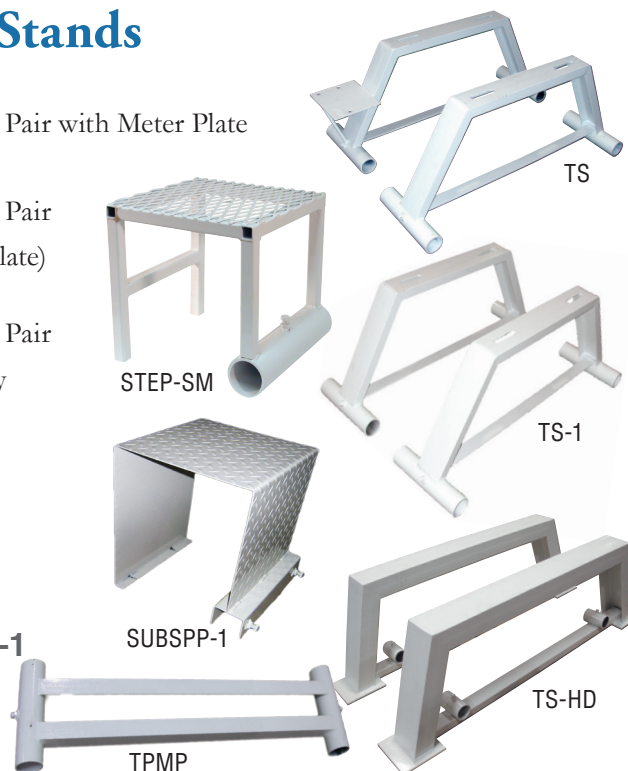
TS-1
Tank Stand Pair
(no meter plate)

TS-HD
Tank Stand Pair
Heavy Duty
1800-1900

TPMP
Pump Plate

TST-1
Step

SUBSPP-1
Step





Pump Station



PS-HOSE

- Completed, assembled, and ready to use
- Dispenser hose 1/2" x 18 ft. with RegO Snap Valve and POL Fill Adapter.

Rego Quick-Acting



7901TB

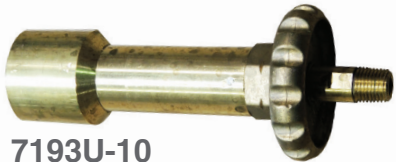
- For cylinder filling hoses
- 1/2" F.NPT inlet connection
- 1/4" F.NPT outlet connection

Rego Hose End Connectors



7193L-10A

- For filling forklift cylinders.



7193U-10

- For DOT cylinder filling hoses
- 1/4" M.NPT inlet connection
- FQCC outlet connection



7193D-10

- For filling DOT cylinders
- 1/4" M.NPT inlet connection
- M.POL CGA 510 outlet connection

POL Adapters



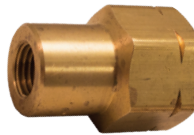
ME393HD

- Heavy duty forging
- Allows quick connection from QCC fill adapter to M.POL fill connector.
- Convenient hex for secure connection
- 15/16" M.ACME x SN swivel POL connection



MSCP-901H

- F.POL x 1 3/4" ACME adapter



5760A

- F.POL x 1/4" FPT

Fill Adapter for Gasmate II & Quick Disconnect Valve

F276329



Rego Adapter

7193T-10

- For filling DOT cylinders
- F.POL CGA 510 inlet connection
- Type 1 15/16" F.ACME outlet connection



Manchester Piping Kit

PIPING KIT MANCHESTER

Pipe nipples, fittings & accessories to field assemble a D2A pump cabinet kit with Manchester 500/1000 gallon AG tank.



**NO SMOKING
OR OPEN FLAMES
THIN 50 FEET**



PUMP STATIONS, AUTOGAS, AND ACCESSORIES

Parker L.P. Gas Hose



Service: A flexible, heavy duty, and high pressure hose for the transfer of liquid or vapor propane or butane, in heater, torch, filling, delivery, and unloading applications.

Part Number	I.D. (in.)	Braid	O.D. (in.)	Approx.Wt. Per 100 Ft.	Max Recom. WP (PSI)	Ferrule Part #
LPH-1/4INDB	1/4	2	5/8	16	350	7327
LPH-3/8IN	3/8	2	3/4	22	350	7332
LPH-1/2IN	1/2	2	15/16	31	350	
LPH-3/4IN	3/4	2	1 1/4	49	350	
LPH-1IN	1	2	1 1/2	61	350	
LPH-1 1/4IN	1 1/4	2	1 7/8	100	350	
LPH-1 1/2IN	1 1/2	3	2 5/32	110	350	
LPH-2IN	2	3	2 3/4	157	350	



Male Pipe MPT x Hose Barb

Part Number	Hose ID	Thread Size
HC-4231	1/4"	1/8"
HC-4232	1/4"	1/4"
HC-4233	1/4"	3/8"
HC-4252	3/8"	1/4"
HC-4253	3/8"	3/8"
BG30 FE	3/8"	1/2"



Female NPT X Hose Barb

Part Number	Hose ID	Thread Size
HC-4631	1/4"	1/8"
HC-5632	1/4"	1/4"
BG-32EC	1/4"	3/8"
BG-32CE	3/8"	1/4"
BG-32EE	3/8"	3/8"
HC-4654	3/8"	1/2"



Part Number	Hose ID
HC-5232	1/4" Male Pipe Thread x 1/4" Hose Barb
HC-5233	3/8" Male Pipe Thread x 1/4" Hose Barb

Male Flare x Hose Barb



Part Number	Hose ID	Thread Size
HC-4835	1/4"	3/8" OD
HC-4855	3/8"	3/8" OD
HC-4857	3/8"	1/2" OD

Female Flare Swivel x Hose Barb



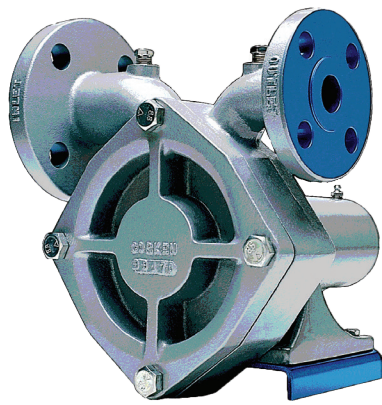
Part Number	Hose ID	Thread Size
HC-4335	1/4"	3/8" OD
HC-4355	3/8"	3/8" OD
HC-4357	3/8"	1/2" OD

Female Flare Swivel x Hose Barb

High Pressure Fittings



Part Number	Description
HC-5335	3/8" Female Flare Adapter x 1/4" ID Hose Barb
HC-5333	1/4" Female Flare Adapter x 1/4" ID Hose Barb



Corken Autogas Pump

Pump Only

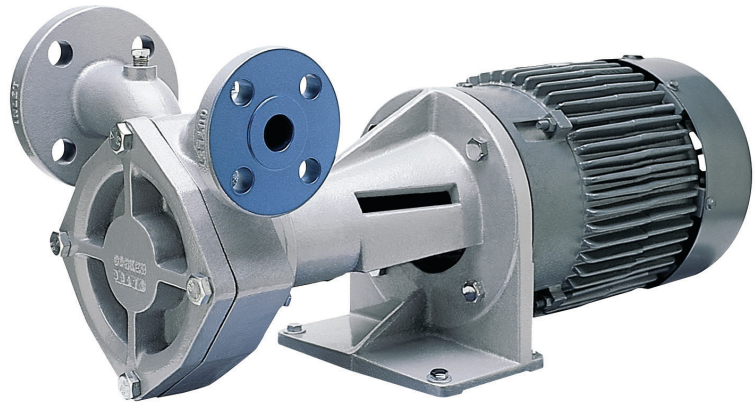
Designed for high-pressure propane motor fueling. Three mounting options available. Direct drive with coupling, belt drive, and direct-mounted with C-face motor. Both pumps run with a three phase power source

Part Number	Flow Rate	Inlet	Outlet
FF075*	up to 40 GPM & 200 PSIG	1 1/2" ANSI 300#	1" ANSI 300#
FF150*	up to 58 GPM & 250 PSIG	1 1/2" ANSI 300#	1" ANSI 300#

*Flanges required for installation. Contact us with your specific requirements.

Pump & Motor

Designed for high-pressure propane motor fueling. Three mounting options available. Direct drive with coupling, belt drive, and direct-mounted with C-face motor. Both pumps run with a three phase power source



Part Number	Flow Rate	Inlet	Outlet
HDPFF075*	up to 40 GPM & 200 PSIG	1 1/2" ANSI 300#	1" ANSI 300#
HDPFF150*	up to 58 GPM & 250 PSIG	1 1/2" ANSI 300#	1" ANSI 300#

*Flanges required for installation. Contact us with your specific requirements.



Variable Frequency Drive (VFD)

A Variable Frequency Drive (VFD) converts the single phase of the FF060 & HDPFF-060 to a three phase power.

Part Number	Size
4204	15 hp
4204-2	20 hp



PUMPS

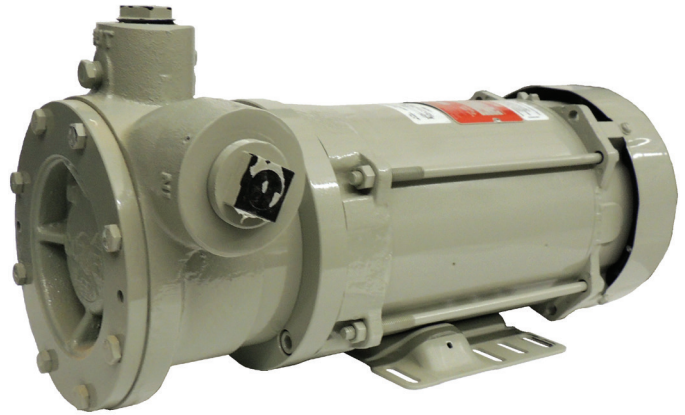


Corken C-Series Pump

Complete with Pump & Motor

Switch Sold Separately

C10 is ideal for single scale cylinder filling operations. Fill 20lb. cylinders in 30-45 seconds and a 100lb. cylinder in 2 1/2-3 minutes. The flow rate is 6.5 gallons per minute at 50PSID. C12 is ideal for faster filling operations including motor fuels. Rated at 15 gallons per minute at 50 PSI.



Part Number	Part Name	PH	Volt	Inlet	Outlet	GPM 50 PSI
C10FD6A	Pump & Motor	1	115/230	1 1/4"	1"	6.5
C12FD6A*	Pump & Motor	1	115/230	1 1/2"	1"	15
C13-B	Pump & Motor	1	115/230	1 1/2"	1"	22
C16MF6A	Pump & Motor	1	230/460	1 1/4"	1"	6.5
C16GD6A	Pump & Motor	3	230/460	1 1/4"	1"	6.5

Model	GPM	Max PSIG
C10	12*	80
C12	19*	85
C13	36*	110
C14	38*	125
C16	9.8	150

*20 PSID @ 3450 RPM

*C-12 used for general filling 20 lb. - 100 lb. cylinders and motor fuel cylinders
Recommend using C-12 with meter application

Part#	Part Name	Type
SM-30	Switch	Motor Mount
S-30	Switch	Wall Mount

Repair Kits

Pump	Seal Assembly	Impeller	Seal Housing	Motor Only	Starter Switch	Heater for Switch	
C10/F10	113-CXA*	1003-0	1004-1X	2556	2275 (600-T0X5)	P28	
C12/F12		1003-2		2556**	2275** (600-T0X5)	P32**	
C13/F13		1003-3		4261+	3784+		
C14/F14		1003-4		4261			
C16		1003-6			2557		
					2557^		
				4885^			

*Includes Case O-Ring (2-246A) and Case Clearance Shims (1014/1014-1)

**with 1 1/2 hp motor

+with 2 hp motor

^with 3 hp motor

Basic Valve & Nipple Kits

PK-BK

Includes safety internal valve, strainer, flex, nipples, pipe fittings, adapters and hoses to complete your pump station.

Meter Piping Kits

LCMK-01

All the extra valves and fittings to install a meter in your pump station system.

MOST PRICING CAN BE FOUND AT WWW.TARANTIN.COM



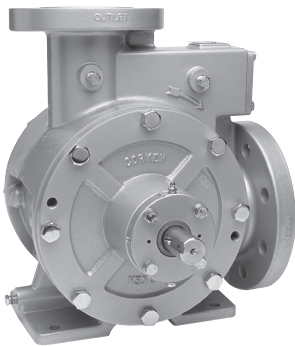
Corken Z3200



The Z-Series Coro-Valve® truck pumps are a new generation of truck pumps specifically designed to comply with the pumping requirements demanded by the LPG industry.

Pump Speed RPM	Differential Pressure		Approximate Delivery on Propane		Break HP Required		Pump Torque Required	
	PSI	(KPA)	GPM	(LPM)	BHP	(KW)	Ft Lbs	(KG/M)
750	50	(345)	112	(424)	6.2	(4.6)	43.4	(58.9)
750	100	(689)	99	(375)	9.9	(7.4)	69.3	(94.0)
650	50	(345)	95	(360)	5.2	(3.9)	42.0	(57.0)
650	100	(689)	84	(318)	8.2	(6.1)	66.3	(89.9)
600	50	(345)	86	(326)	5.0	(3.7)	41.3	(56.0)
600	100	(689)	76	(288)	7.8	(5.9)	64.8	(87.9)
500	50	(345)	70	(265)	3.8	(2.8)	39.9	(54.1)
500	100	(689)	62	(235)	5.8	(4.3)	60.9	(82.6)

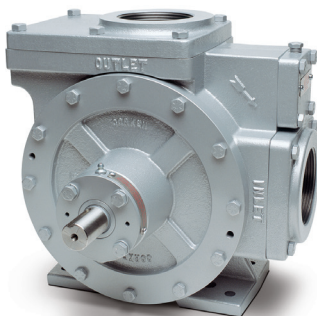
Z4500



The Z4500 is a 4 inch stationary pump designed for transport loading and multiple bobtail loading applications. Rated up to 800 RPM.

Pump Speed RPM	Differential Pressure		Approximate Delivery on Propane		Break HP Required		Pump Torque Required	
	PSI	(BAR)	GPM	(LPM)	BHP	(KW)	Ft Lbs	(KG/M)
800	50	(3.4)	400	(1511)	13.3	(9.1)	88	(12.0)
800	100	(6.9)	360	(1360)	26.7	(19.7)	176	(24.3)
650	50	(3.4)	326	(1209)	10.8	(8.0)	87	(12.0)
650	100	(6.9)	283	(1070)	21.7	(16.1)	175	(24.2)
500	50	(3.4)	235	(888)	8.3	(6.2)	87	(12.0)
500	100	(6.9)	200	(756)	16.7	(12.4)	175	(24.2)

Z3500



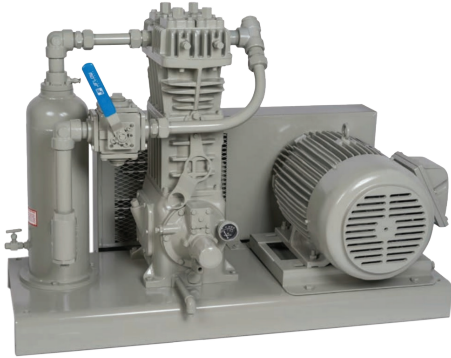
The Z3500 is a 3 inch foot mount pump designed for stationary applications. Rated up to 800 RPM. Direct replacement for 3 inch Blackmer Pump.

Pump Speed RPM	Differential Pressure		Approximate Delivery on Propane		Break HP Required		Pump Torque Required	
	PSI	(BAR)	GPM	(LPM)	BHP	(KW)	Ft Lbs	(KG/M)
800	50	(3.4)	121	(460)	6.6	(4.9)	43.4	(6.0)
800	100	(6.9)	110	(420)	10.6	(7.9)	69.3	(9.6)
650	50	(3.4)	98	(371)	5.2	(3.9)	42	(5.8)
650	100	(6.9)	88	(333)	8.2	(6.1)	66.3	(9.2)
500	50	(3.4)	73	(276)	3.8	(2.8)	39.9	(5.5)
500	100	(6.9)	63	(238)	5.8	(4.3)	60.9	(8.4)



PUMPS

491-107



Add 107 to the model number to include the following: complete gas compressor bulk plant unit with pressure gauges, steel base plate, liquid trap, 4-way valve, strainer, interconnecting piping, adjustable driver slide base, V-belt drive and enclosed belt guard – ready to receive an electric motor driver. Relief valve not included. Corken suggests a 250 PSI relief.

Specifications	Model Size			
	91	291	491	691
Number of Stages	1	1	1	1
Number of Cylinders	1	2	2	2
Bore of Cylinder, Inches (cm)	3 (76.2)	3 (76.2)	4 (101.6)	4½ (114.3)
Stroke, inches (cm)	2½ (63.5)	2½ (63.5)	3 (76.2)	4 (101.6)
Min at 400 RPM	4 (113)	8 (227)	17 (481)	29 (821)
Max at 825 RPM	8 (227)	16 (453)	36 (1020)	60 (1699)
Max Discharge Pres. PSIG (bars)	335 (23.1)	335 (23.1)	335 (23.1)	335 (23.1)
Continuous Duty	5	5	5	5
Intermittent Duty	7	7	7	7
Maximum Allowable Driver Size, HP	7½	15	15	30
Maximum Flow - Propane GPM (m3/hr)	50 (11.4)	101 (22.9)	215 (48.8)	361 (82.0)

* Maximum flow is based on 825 RPM or maximum HP, 30 PSID. Capacities are based on 100°F and will vary depending on piping and conditions.

Use 5w30 or 10w30 Non-detergent motor oil.

Repair Kits for Reciprocating Compressors (LPG/NH3)

Compressor Model #	91		291M		491M		691M		D/FD891M	
Repair Kit Part #	3549-X1		3550-X1		3551-X1		3552-X2		5578-X2A	
Suction Valve Assembly	3483-1X	1	3483-1X	2	2532-1X	2	3948-2X	2	3856-2X	4
Discharge Valve Assembly	3485-X	1	3485-X	2	2439-X	2	3857-2X	2	3857-2X	4
Piston Ring	1772	3	1772	6	1773	6	1739	6	1739	8
Piston Ring Expander	1775	3	1775	6	1776	6	1740	6	1740	8
Packing Set (V-Ring)	1452-1X1	1	1452-1X1	2	1452-1X1	2	1725-2X	2	1725-2X	2
Packing Set (Segmented)	-	-	-	-	-	-	-	-	3810-1X	2
Connecting Rod Bearing (Pair)	1367	1	1367	2	1491	2	3542	2	3542	2
Gasket Set	2526-XA	1	1281-XA	1	1481-X6A	1	1744-X1A	1	3970-1XA	1
Oil Seal	3259	1	1278	1	4438	1	3526	1	3526	1
Oil Deflector Ring	-	-	-	-	-	-	-	-	1732	2

MOST PRICING CAN BE FOUND AT WWW.TARANTIN.COM



Repair and Rebuild Kits for Sliding Vane Pumps (LPG/NH3)1

Pump Model #	521E		1021E		Z2000, ZH2000, ZX2000, ZXH2000		Z3200, ZH3200		Z3500		Z4200, ZH4200, Z4500	
Repair Kit Part #	2904-X26		2906-X26		3193-X16		3195-X16		3195-X26		3197-X16	
Description	Part #	Qty	Part #	Qty	Part #	Qty	Part #	Qty	Part #	Qty	Part #	Qty
Mechanical Seal Assembly	1769-XRA6	2	1769-XRA6	2	4431-XA6	2	4431-XA6	2	6660-XA6	2	4464-XA6	2
Blade	1168-7	10	1308-9	10	4428	6	4232	6	3936	6	4448	6
Blade Driver	-	-	-	-	4262-X	3	4262-X	3	5554-X	6	4449-X	5
Shaft Bearing	2754-X	2	2754-X	2	2754-X	2	2754-X	2	2754-X	2	4460-X	2
Thrust Bearing	-	-	-	-	4432	2	4432	2	4432	2	4453	2
Thrust Bearing Mounting Ring	-	-	-	-	4435	2	4435	2	4435	2	4454	1
Sideplate	1163-2	2	1209-1	2	-	-	-	-	-	-	-	-
Grease Seal (Outer)	1358	2	1358	2	4441	2	4441	2	4441	2	4463	2
Grease Seal (Inner)	-	-	-	-	4438	2	4438	2	4438	2	4462	2
Case O-Ring (Buna-N)	2-261A	2	2-268A	2	2-261A	2	2-261A	2	2-268A	2	2-270A	2
Flange O-Ring (Buna-N)	2-234A	2	2-245A	2	2-231A	2	2-264A	2	2-245A	1	2-231A	2
Flange O-Ring (Buna-N)	-	-	2-249A	2	-	-	-	-	2-259A	1	2-234A	1
Relief Valve O-Ring (Buna-N)	2-224A	1	2-228A	1	2-224A	1	2-224A	1	2-228A	1	2-234-A	1
Relief Valve O-Ring (Buna-N)	2-112A	1	2-112A	1	-	-	-	-	-	-	-	-
Shim (0.002)	-	-	-	-	4439	8	4439	8	4439	8	4458	8
Shim (0.010)	-	-	-	-	4439-1	2	4439-1	2	4439-1	2	4458-1	2
Shim (0.020)	-	-	-	-	4439-2	2	4439-2	2	4439-2	2	4458-2	2
Shaft Key	-	-	-	-	2270	1	2270	1	2270	1	4459	1

Rebuild Kits - Includes the repair kits listed above plus the parts shown in the table below

Rebuild Kit Part #	No Kit2		No Kit2		3194-X16		3196-X16		3196-X26		3198-X16	
Cam	1162-2	1	1201-2	1	4414	1	4242	1	5539	1	4443	1
Sideplate	-	-	-	-	4427	2	4231	2	3935	2	4446	2

Full Rebuild Kit - Includes the rebuild kits listed above plus the parts shown in the table below.

Rebuild Kit Part #	No Kit2		No Kit2		3194-X36		3196-X36		3196-X46		3198-X36	
Rotor Shaft Assembly	1166-1X1R	1	1208-1X1R	1	4430-X2R	1	4495-X2R	1	1208-1X6R	1	4444-X2R	1



PUMPS



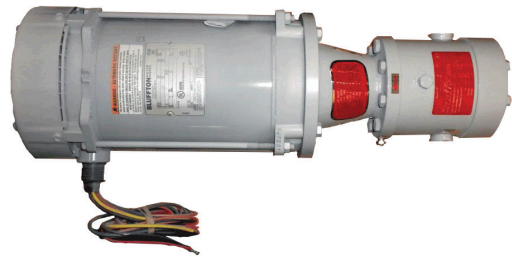
GC-1LZ-M
with an EM-5B Motor



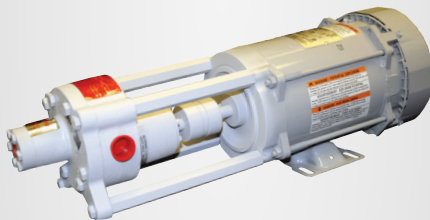
GC-1LZ
with foot mount



GC-1LZ-M

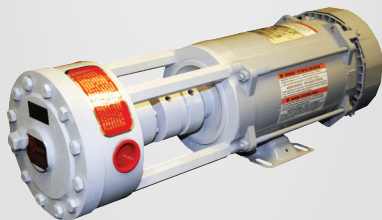


DW-1Z-M
with an EM1-3B Motor



- Gear set easy to maintain without disturbing the mechanical shaft
- No service ball bearing with no load design
- Balanced gear configuration minimizes gear tooth contact
- Superseal Mechanical shaft seal assembly, built as a kit onto the pump shaft

EG-1Z-M
with an EM1-3B Motor



Part Number	Description
DW-1Z	Pump 10 GPM, 3/4"
EG-1Z	Pump 10 GPM, 3/4"
EC-HZ	Pump 15 GPM, 1"
GC-1LZ	Pump 13 GPM, 3/4"
EM1-3B	Motor 1 HP, 3600 RPM
EM-5B	Motor 1.5 HP, 3600 RPM

**ASK ABOUT OUR SMITH PUMP
AUTOGAS PACKAGE**



Threaded Internal Valves



A3209D050

Designed for use on small capacity pumping systems and bobtail vapor equalization. The valve is compact with a one piece construction. All critical operating components are located in the valve body and inside the container coupling for maximum protection against damage. For a larger LP Gas Vapor Capacity use the A3209R080.



A3212R250

Designed for use on bobtail delivery trucks, transports and stationary storage tanks. This valve may be installed in full or half couplings. The midway stem position allows for quicker pressure equalization. There is a built in excess flow valve.



A3213DT400

Designed for use on bobtail delivery trucks, transports and stationary storage tanks. This valve may be installed in full or half couplings. The midway stem position allows for quicker pressure equalization. There is a built in excess flow valve.

Internal Valves



For liquid withdrawal on MC331 bobtail delivery trucks, transports and large stationary storage tanks with flanged connections. Fully automatic opening and closing as the pump is turned on or off. Quicker unload to provide more profitable operation. Reduces possibility of spillage that may result from a collision.

Part Number	Inlet Connection ANSI Flange	Outlet Connection ANSI Flange	Diameter Bore
A7883FK	3" - 300#	3" - 300#	4 13/16"
A7884FK	4" - 300#	4" - 300#	5 13/16"

Flomatic Replacement Parts	Part Number	
Description	A7883FK	A7884FK
Filter	A7884-201	A7884-201
Gasket (Bottom Flange)	A7883-30	7565-48
Bolts with Nuts	A7884F-43	A7884F-43
Gasket (Upper)	A7883-29	A7884-29
Guide-Pump Prime Valve	A7883F-37SS	A7883F-37SS
Pump Prime Valve Assembly	A7884-60	A7884-60
Gasket (Pump Prime Valve)	7884-33	7884-33
Stem Assembly	A7883F-33	A7883F-33
Seat Disc	A7883-5	7884-5
X-Seal (Upper)	A7883-7T	7884-7T
X-Seal (Lower)	7884-6T	7884-6T

Flomatic Replacement Parts	Part Number	
Description	A7883FK	A7884FK
Complete Rebuilt Kit	A7883F-50	A7883F-50
Repair Kit	A7883F-150	A7884F-150
Lower Piston Rebuild Kit	A7883F-80	A7884F-80
Control Valve	A7853A-74	A7853A-74



A7884-201

Accessory

Filter	3-Way Valve
A7884-201	A7853A



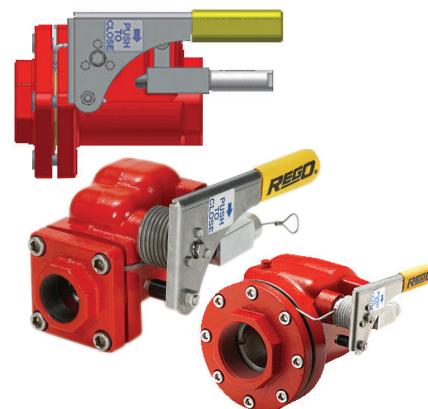


VALVES

Rego Emergency Shut-off Valves

Especially designed for installation in liquid or vapor transfer lines at LP-gas bulk plants to provide for quick shut off of liquid or vapor flow in the event of an accidental pull-away or hose rupture.

Part Number	Exclusively For Use With	Inlet and Outlet Connections	Liquid Flow Capacity At 10 PSIG Pressure Drop (GPM)
A6010	LP-gas	1 1/4" F./NPT	-
A6016	LP-gas	2" F.NPT	475 (LP-gas)
A6024	LP-gas	3" F.NPT	-
6016RA			
A6006		3/4"	
A6008		1"	



Bypass Valves



2 inch low pressure build up bypass valve designed for applications requiring protection for positive displacement pumps.
ZV200



The N100 Series is designed for use on pumps from 2"-4". The throttling action of the N100s allows only surplus pump discharge to be returned to the tank.
N100

Pneumatic Actuators



A3213PA
For A3213A/T & A3212R/RT valves.

A3209PA
For A3209 valve.

Shut Off Signs



P-81
Pull to Close



P-82
Push to Close



ESV Pneumatic Controls

Full Kit

Part Number	Description
6016PN-50	Cylinder assembly kit for ESV pneumatic shutdown



Pneumatic Tube & Fittings



Part #	Description	Size
3331	3-Way Control Valve	1/4" FPT
44P	Poly Tubing	1/4" x 100'
44P-5C	Poly Tubing	1/4" x 500"
AP62P4	Union	1/4" Tube x 1/4" Tube
AP61P4	Nut & Ferrule	1/4" Tube
AP64P4	Tee	1/4" Tube
AP68P4X4	Adapter	1/4" Tube x 1/4" MPT
AP68P4X2	Adapter	1/4" Tube x 1/8" MPT
AQ65P4	90° Elbow	1/4" Tube x 1/4" Tube
P-81	Sign, Pull to Close	10" x 12"
P-82	Sign, Push to Close	10" x 12"
RHP400	Single Stage Regulator, Nitrogen	0-400 PSI
11A-P201	Sign, Propane Emergency Electric Shutoff	14" x 10"
P-127	Sign, Propane Container, Emergency Shut Off, Poly	

Control Components

Part Number	Description
7605AP-10	Emergency Valve
7605AP-12	Charging Valve
7605AP-13	Tee
7605AP-14	Hex Nipple
7605AP-15	Tubing Connector
7605AP-16	Tubing Tee
7605A-17	Union (Plastic Tube)
7519-64	Indicator
7605AP-19	Bushing 1/8" x 1/4"
7605AP-81	Bracket for emergency valve
7605AP-82	Bracket for charge valve
2303-3	Screw
7605A-BT	Black tubing 1/4" x 100'
7605PN-30	Instruction Sheet
7605APN-8A	Extra shutdown valve assembly
7605AP-16	1/4" tubing tee with nuts
7605AP-15	1/8" NPT x 1/4" tubing. Straight connector

Rego Remote Cable Controls for Internal Valves

Designed for use with the 3200L Remote Operating Lever. Operates internal valves from a remote location.



Part Number	Description	Contents
3200C	Remote Cable Kit	100 Foot Cable, 6 Cable Clamps, Quick Link, Sign, Fuse Link, Steel Nut and Bolt
3200L	Operating Lever	Lever Assembly
7606RM	Cable Release	Cable Release



Sight Flow Indicators for Bulk Plants



**2" Sight Flow Indicator
A7794**

Designed to promote maximum pump efficiency, the indicator enables bulk plant operators to visually inspect liquid flow conditions. With glass on both sides of the indicator, flow can be observed from either side, even under poor light conditions. The integral swing check also serves as a back check valve to prevent reverse flow and product loss if the hose fails in a loading operation.

Also available is the A7796 3" sight flow indicator.

Globe and Angle Valves



**A7513AP
2" Globe Valve**



**A7514AP
2" Angle Valve**

A7500 Series is designed to assure positive shut-off and long, maintenance free service life in liquid and vapor service on bulk storage containers, transports, bobtails, cylinder filling plants and plant piping. The body is made of ductile iron for durability. The "V" ring spring loaded pressure stem seal provides for leak proof operation. No packing to retighten or replace.

Available in a wide variety of sizes.

Relief Valve



**A7534G
Pressure
Relief Valve**

Especially designed for use as a primary relief valve on large stationary storage containers, these low profile relief valves are generally mounted in half couplings. However they are designed so that the inlet ports clear the bottom of a full 2" coupling. This assures that the relief valve should always be capable of maximum flow under emergency conditions.



**7534-20
Pipeway Adapter**



**P770-3-1/2
Protective Cap**

Hydrostatic Relief Valve



3127U

Designed especially for the protection of the piping and shut off valves where there is a possibility of trapping liquid. The body is made of brass with a stainless steel spring. The container connection is 1/4".



Multiport Relief Valve

A8574G



Designed for use as a primary relief device on large stationary pressurized storage containers with flanged openings. These manifolds incorporate an additional relief valve allowing for servicing or replacement of any one of the relief valves without evacuating the tank.

Liquid Vent Valve

A2805C



Designed for installation on bulk storage containers, this valve combines a pressure gauge mounting and provision for a fixed tube liquid level gauge. The shut off valve prevents the pressure gauge from being subjected to constant pressure thereby prolonging its life and accuracy.

Internal Relief Valves for Transports and Delivery Trucks

Fully Internal "Pop-Action" Pressure Relief Valves for Transports and Delivery Trucks

Designed specifically for use as a primary relief valve with ASME transports and delivery trucks with 2" and 3" NPT couplings. All stainless steel construction.



Part Number	Start to Discharge Setting (PSIG)	Container Connection M.NPT	Flow Capacity SCFM/Air		For Tank Surface Area Up To	Protective Cap (Included)
			UL (At 120% of Set Pressure)	ASME (At 120% of Set Pressure)		
A8434G	250	2"	3700	3456	175 sq. ft.	A8434-11B
A8436G	250	3"	10210	9598	602 sq. ft.	A8436-11B

Removal Tools

Assists with removing fully internal relief valves.

Part Number: A8434-40 for use on A8434G

Part Number: A8436-40 for use on A8436G

Apollo Carbon Steel Double Union End Ball Valves



600 PSI WOG,
250 PSI LP gas

Feature heavy duty quarter turn lever. Steel barrel stock design and reinforced TFE seats and seals for ease of installation and maintenance. UL listed for LP gas.

Part Numbers		Size
Threaded Ends	Weld Ends	
73-301-01		1/4"
73-302-01		3/8"
73-303-01	73-403-01	1/2"
73-304-01	73-404-01	3/4"
73-305-01	73-405-01	1"
7-306-01	73-406-01	1-1/4"
73-307-01	73-407-01	1-1/2"
73-308-01	73-408-01	2"



VALVES

RegO Hose End Filler Valve Connectors



Style A
For Liquid Filling



Style B
For Liquid Filling



Style C*
For Vapor Equalizing



Style D*
For Vapor Equalizing

Part No.	Material	Style	Connection		Tail Piece Bore	Hose End to Nut	Overall Length
			Hose (M. NPT)	Coupling (F. ACME)			
3175B	Brass	A	1/2"	1 3/4"	35/64"	2"	2 7/8"
3175	Brass	A	3/4"	1 3/4"	3/4"	2"	2 7/8"
3175A	Brass	A	1"	1 3/4"	3/4"	2"	2 7/8"
3185	Brass	B	1 1/4"	2 1/4"	1 3/16"	2 1/16"	3 1/8"
3195	Brass Nut & Steel Nipple	B	2"	3 1/4"	1 13/16"	2 1/8"	3 5/8"
A3175	Steel	A	3/4"	1 3/4"	3/4"	2"	2 7/8"
A3175A	Steel	A	1"	1 3/4"	3/4"	2"	2 7/8"
A3185	Steel	B	1 1/4"	2 3/4"	1 3/16"	2 1/8"	3 1/8"
A3195	Steel	B	2"	3 3/4"	1 13/16"	2 1/8"	3 5/8"
3171	Brass	C	3/8"	1 1/4"	13/32"	1 3/16"	2 7/16"
3171A	Brass	C	1/2"	1 1/4"	17/32"	1 3/16"	2 7/16"
3181	Brass	C	3/4"	1 3/4"	11/16"	2"	3 1/4"
3181A	Brass	C	1"	1 3/4"	15/16"	1 7/8"	3 1/8"
3191	Brass	D	1 1/4"	2 1/4"	1 3/16"	2 1/8"	3 5/16"

*Style C and D have nipple (not shown) required to open vapor equalizing check assembly

Female ACME Caps



Cap With Chain & Ring		Cap Only Part No.	Material	Threaded Connection
Part No.	Ring for Pipe			
1708C	3/4"	-	Brass	F.POL (CGA510)
3144-91	3/4"	3144-9P	Cycolac	1 1/4" F.ACME
3174-91	3/4"	MSCP-M3274-9P	Cycolac	1 3/4" F.ACME
3174-93	1 1/4"	MSCP-M3274-9P	Cycolac	1 3/4" F.ACME
3175P	1 1/4"	-	Brass	1 3/4" F.ACME
7141FP	1 1/4"	-	Brass	1 1/4" F.ACME
3184-90	2"	-	Brass	2 1/4" F.ACME
3194-90	2"	-	Brass	3 1/4" F.ACME
A3184-90	2"	-	Steel	2 1/4" F.ACME
A3194-90	3"	-	Steel	3 1/4" F.ACME
ME106-01	3"	ME106	Cycolac	3 1/4" F.ACME
PC555	3/4"	-	Brass	F.CGA555

ACME Reducing Fittings



Type Number	Material		Male ACME	Female ACME
	Brass	Steel		
M611	-	-	1 3/4"	2 1/4"
M612	-	-	1 3/4"	3 1/4"
5776	A5776	-	1 3/4"	3 1/4"
5778	-	-	2 1/4"	3 1/4"

QCC Type 1 Caps



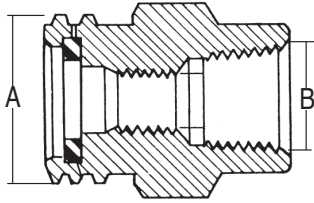
Part No.	Description	Material
907FP	1 5/16" Type 1	Brass
DC-QCC1	1 5/16" Type 1	Plastic
3174-93L	Cap & Lanyard	-
PPC3B	Tear Away Protective Cap	Plastic

Note: DC-QCC1 is a non-threaded dust cover.



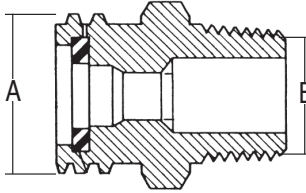
RegO ACME Adapters

Male ACME X Female NPT Adapters



Gasket (Furnished with adapter)

Male ACME X Male NPT Adapters

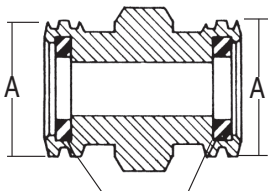


Gasket (Furnished with adapter)

Part No.	Material	A: M. ACME	B: FNPT	Spare Gasket Part No.
M498-4/2	Brass	1 1/4"	1/4"	A2797-20R
M498-6/3	Brass	1 1/4"	3/8"	MSW-3
5764A	Brass	1 3/4"	1/4"	A2697-20R
5764B	Brass	1 3/4"	3/8"	A2697-20R
5764C	Brass	1 3/4"	1/2"	A2697-20R
5764D	Brass	1 3/4"	3/4"	A2697-20R
5764E	Brass	1 3/4"	1"	A2697-20R
5766E	Brass	2 1/4"	1"	A3184-8R
5766F	Brass	2 1/4"	1 1/4"	A3184-8R
5768G	Brass	3 1/4"	1 1/2"	A3194-8R
5768H	Brass	3 1/4"	2"	A3194-8R
5768J	Brass	3 1/4"	2 1/2"	A3194-8R
A5764D	Steel	1 3/4"	3/4"	A2697-20R
A5764E	Steel	1 3/4"	1"	A2697-20R
A5768H	Steel	3 1/4"	2"	A3194-8R

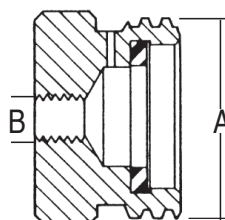
Part No.	Material	A: M. ACME	B: MNPT	Spare Gasket Part No.
M498-4/2	Brass	1 1/4"	1/2"	A2797-20R
M498-6/3	Brass	1 1/4"	3/4"	MSW-3
5763D	Brass	1 1/4"	3/4"	A2797-20R
5765D	Brass	1 3/4"	3/4"	A2697-20R
5765E	Brass	1 3/4"	1"	A2697-20R
5765F	Brass	1 3/4"	1 1/4"	A2697-20R
5767F	Brass	2 1/4"	1 1/4"	A3184-8R
5767G	Brass	2 1/4"	1 1/2"	A3184-8R
5767H	Brass	2 1/4"	2"	A3184-8R
5769H	Brass	3 1/4"	2"	A3194-8R
5769J	Brass	3 1/4"	2 1/2"	A3194-8R
5769K	Brass	3 1/4"	3"	A3194-8R
A5765C	Steel	1 3/4"	1/2"	A2697-20R
A5765D	Steel	1 3/4"	3/4"	A2697-20R
A5765E	Steel	1 3/4"	1"	A2697-20R
A5765F	Steel	1 3/4"	1 1/4"	A2697-20R
A5767F	Steel	2 1/4"	1 1/4"	A3184-8R
A5769H	Steel	3 1/4"	2"	A3194-8R
A5769K	Steel	3 1/4"	3"	A3194-8R

RegO Male ACME Adapters



Gasket (Furnished with adapter)

RegO ACME Adapters



ACME x Miscellaneous (Recommended for securing hose-end valve when not in use).

Part No.	Material	A: M. ACME	Spare Gasket Part No.
5765M	Brass	1 3/4"	A2697-20R
5767M	Brass	2 1/4"	A3184-8R
5769M	Brass	3 1/4"	A3194-8R

Part No.	Material	A: M. ACME	B: Thread	Spare Gasket Part No.
A5764W	Steel	1 3/4"	3/8"*	A2697-20R

*3/8" -16 UNC Thread.



Liqua-Tech Mid-Com Meter

Liqua-Tech's LPM-102 equipped with Mid:Com's intrinsically safe E:Count LT Counter for established reliability, accuracy, and safety. This meter is also equipped with Liqua-Tech's Patented Trac-Bearing measuring chamber, for improved accuracy, reliability and lower maintenance. The Trac-Bearing design controls and stabilizes piston rotation more efficiently than standard control rollers, resulting in greater sustained linear accuracy with less wear.

With ATC: 090028-706



FEATURES AND BENEFITS OF ELECTRONIC REGISTRATION

- Multi-point calibration to improve the accuracy over a wide flow range
- Electronic Temperature Volume Compensation (ETVC) to reduce lost volume
- Increased security
- Future expansion and modularity with RS232/485 communication
- Greater control and accuracy of the delivery system through use of two stage valves, optical air eliminators with a LectroCount
- Register as a central control unit
- Lower total cost of ownership through fewer moving parts, solid state electronics and longer MTBF (Mean Time Between Failure).



Lectrocount LCR-II

Liquid Controls produces among the most reliable and accurate metering systems available, worldwide. For truck-mounted or fixed-site custody transfer applications requiring Weights & Measures approved accuracy, LC products deliver consistent, error-free, dependable service. Liquid Controls family of

LectroCount electronic registers provide:

- Improved efficiency relative to mechanical systems
- Electronic temperature compensation
- Weights & Measures approvals
- Ruggedness and reliability
- Simplicity of Operation
- Compatibility with mobile computing solutions

Optional Air Eliminator + Optional Vapor Eliminator

MA-7-GY-10-LCR II



Liquid Control Meter

LC Meters are known worldwide for exceptional accuracy, reliability, and longevity in a broad range of applications including truck applications metering refined petroleum products and LPG.

Meter Registers

Part Number	Description
788700-002	Veeder Root Register Only
789002-002*	V.R. Register Printer-Face Up Ticket – Right Hand
100498-009	3/4" Neptune 631 (Code AEAAD)
100498-016	1" Neptune 631 (Code AAAAD)
880030-000	1 1/4-2" Neptune 833 (Code O)

*Factory rebuilt register available. Core return required.

Veeder Root Registers

Neptune Registers



788700-002



600 SERIES



789002-002



800 SERIES

MOST PRICING CAN BE FOUND AT WWW.TARANTIN.COM

Temp Comp Kit

101080-006

Temp Comp Retrofit kit from non-temp to temp comp.

New NTEP RULE

Starting 2026 All new sold ¾" or 1" PD style meters must be Temp Comp meter. Starting 2030 all existing non-temp meters must be retrofitted to temp comp meters.

Tried and proven quality, Liqua-Tech Corporation makes one of the best mechanical temp comp adapters for your meters. They will work with LPM-102's and Red Seal ¾" and 1" meters.

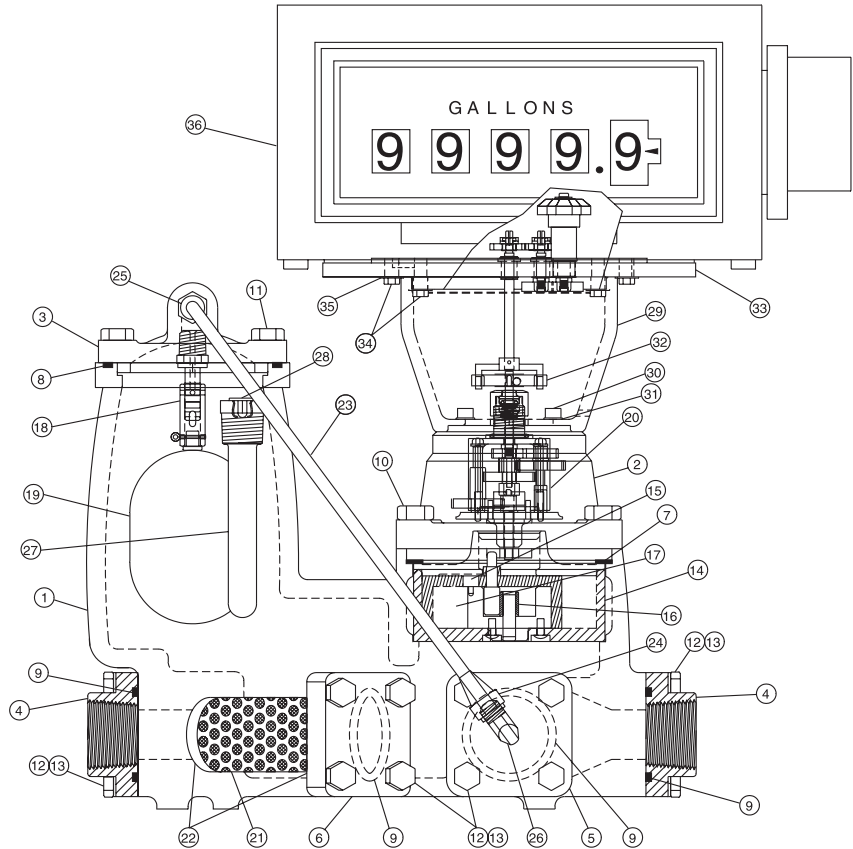


The requirement in paragraph 2.21.2 of Handbook 1301 requires:

- Automatic temperature compensation for metering systems with a maximum rated capacity greater than 20 gpm.
- Automatic temperature compensation for metering systems with a maximum rated capacity of 20 gpm or less that are placed into service after January 1, 2026.
- As of January 1, 2030, all metered sales, regardless of maximum rated capacity, shall be provided with automatic temperature compensation.

It should be understood that all existing installations of meters are permitted to be continued in use in their present state until January 1, 2030. If an existing installation, for example a dispenser, is removed from service and re-installed at another location or facility prior to January 1, 2026, it is not required to have automatic temperature compensation installed. However, any new installation of new or existing equipment made after January 1, 2026, must be provided with temperature compensation.

LPM - 102 w/rest register (w/o temp comp) complete		090534-100
1	Main case housing	400027-00
2	Cover, main case	087173-710
3	Cover, vapor eliminator	087193-710
LPM - 102 w/rest register (w/o temp comp) complete		090534-100
4	Flanges, inlet/outlet	087180-710
5	Flange, differential valve	087179-710
6	Flange, strainer	400025-001
7	Gasket, main case	004861-016
8	O-Ring, vapor eliminator flange	100139-012
9	O-Ring, inlet/outlet flange	100139-007
10	Bolt, Hex Head 7/16 x 1-1/4	
	Drilled	040237-005
	Undrilled	040237-004
11	Bolt, Hex Head 3/8 NC x 1	100067-027
12	Bolt, Hex Head 5/16 NC x 1	100063-26
13	Loackwasher, split 5/16	100121-010
14	Measuring chamber	042075-101
15	Seal pin	042792-000
16	Roller, control	042086-010
17	Diaphragm	042791-000
18	Vapor return valve	087190-000
19	Float	087189-001
20	Gear Train, 43.5 ratio, US Gal	080905-017
21	Strainer 120 Mesh	101738-001
22	O-Ring strainer end caps	100139-006



LPM - 102 w/rest register (w/o temp comp) complete		090534-100
23	Tube assembly, vapor release	087196-001
24	Nut, flared	087198-000
25	Male connector 1/8 NPT x 1/4 Tube	084826-100
26	900 Elbow, 1/8 NPT x 1/4 Tube	087195-000
27	Thermowell	086666-702
28	Cover, thermowell	083732-000
29	Register adapter tower	886150-000
30	Sockethead screws, 10-32 x 3/8	088524-010
31	Lock Washers, split #10	041211-000

LPM - 102 w/rest register (w/o temp comp) complete		090534-100
32	Star Drive, with set screw	082976-001
33	VRA-101-Register gear plate adapter (w/o Temperature comp)	886101-001
34	Cap screws, 1/4-28 x 5/8	
	Drilled	100061-101
	Undrilled	100061-100
35	Lock Washers, ext 1/4	100123-100
36	Register complete, Veeder Root (non printing)	788700-102

1" Meters

Designed for retail sales dispensing units, the Liqua-Tech Model LPM-102 offers the widest flow range (3-18gpm) available in a meter this size and contains all required accessories including vapor eliminator, strainer and differential valve. ATC available.

Approvals & Standards

NTEP, UL

End Connection

Female Threaded x Female Threaded

Flow Rate

3 to 18 GPM

Nominal Size

3/4" x 1"

Pressure Rating

350 PSI

Seal Material

Buna-N

Temperature Rating

-10 to 125 Deg F

Features / Benefits

- At the Heart of the Model LPM-102 Flowmeter is the Superior Liqua-Tech Measuring Chamber
- It Features a Hard-Coated Piston with Special Dense Metal Oxide Finish and Hardened Steel Bearing Shaft, Field Proven in Thousands of Installations
- The Trac-Bearing Design Controls and Stabilizes Piston Rotation More Efficiently than Standard Control Rollers, Resulting in Greater Sustained Linear Accuracy with Less Wear
- The LPM-102 is Equipped with Veeder-Root Printing or Non-Printing Registers, for Established Reliability and Lowest Operating Torque
- The Exclusive Liqua-Tech Register Gear Plate Adapter Offers Neptune Style Change Gears for Ease of Calibration



090534-100 Without Temp Comp Kit



090028-105 With Temp Comp Kit

COMPRESSORS

Pump Out Adapters & Kit

VENTUR-EVAC

Pump Out Adaptor



VENTUR-EVAC HOSE KIT

Kit Includes:

(1 each): 3121, 3127U, 3175B, 7550P, 7590U-10, LPH-1/2X50P, LPH-3/4X50P, M498-4/2

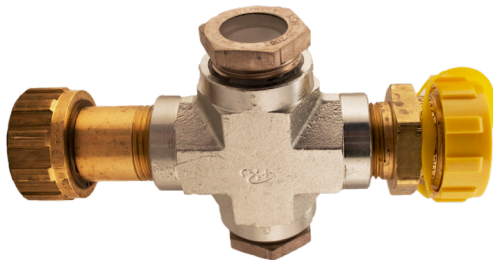
(2 each): 3171A, 3175, 5765D, 600115, 600120, 80-104-01



SG100-C

Comes with Sight Glass

1 3/4" M.ACME x 1 3/4" F. ACME



HIGHLIGHTS OF THE VENTUR-EVAC

- Reduce Labor Costs: Tank evaluations can be performed by your delivery drivers while they are on their routes.
- Immediately remedy tank overfills: No more calling back to the shop to dispatch service personnel for costly pump outs or flare offs.
- Easily fix stuck backcheck valves: Closing one ball valve reverses the flow of liquid, immediately unseating the backcheck valve.
- Efficiency and Cost: One person, one truck operation reduces labor costs during tank evacuation
- Safe to operate: Eliminates the ignition hazard created by an engine driven compressor.
- Reliability: The absence of moving parts increases longevity over other evacuators on the market.

Multipurpose Valve

A8018DP

Part Number	Inlet Connection (M. NPT)	Outlet Connection (F. NPT)	Filling Connection (M.ACME)	Filling Capacity At 20 PSIG Pressure Drop GPM/NH3	Approximate Excess Flow Liquid Closing Flow GPM/NH3	Accessories	
						Hydrostatic Relief Valve	Vent Valve
A8018DP	1 1/4"	1"	1 3/4"	74	50	SS8001J	TSS3169

*Determined at 9 to 12 PSIG differential.



MOST PRICING CAN BE FOUND AT WWW.TARANTIN.COM

Smith Pump with Honda Gas Engine

EG-1Z#7H

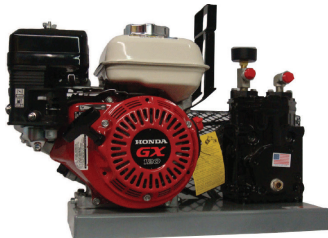


Krug Portable Compressor

H50LPH - Compressor with LP engine

H50GH - Compressor with gasoline engine

16771 - Compressor only (no engine)



Uses include on-site upgrading or downgrading size of storage in the field and emptying cylinders or tanks in need of repair.

Part Number	Qty	Description
LPH-1/2X18P	2	18ft. 1/2" hoses w/ends
LPH-3/4X40P	1	40ft. 3/4" hose w/ends
3171A	2	1 1/4" F.ACME x 1/2" MPT
7572C-14A	1	Check Loc Adapter 3/4"
3175	2	1 3/4" F.ACME x 3/4" MPT
7550P	1	Transfer Valve 3/4"
5765D	1	1 3/4" M.ACME x 3/4"
600120	1	Coupling SCH 80 3/4"
A7705P	1	Globe Valve 3/4" FPT
A7704P	2	Globe Valve 1/2" FPT
3175B	1	Coupling, 1 3/4" F.ACME x 1/2"

Also available in natural gas and electric models.

Repair parts available as well.

Compressors are extremely versatile as they can be used to transfer liquids between tanks, off-load liquids, recover residual vapor and evacuate vapors for cylinder maintenance.

Part #	Qty	Description
12 PLUG	1	3/4" NPT square head steel pipe plug for EG-1*
34 PLUG	1	3/4" NPT square head steel pipe plug for EC-H*
E-2	1	Gear end cover
3/8-16Tx1-1/2L	8	Short GR.5 cap screws for gear & cover
3/8-16Tx3-1/2L	4	Long GR.5 cap screws for mounting to spacers
6230-28	1	O-ring for gear end cover
EG-5	1	Drive gear for EG-1
EC-5H	1	Drive gear for EC-H
EG-6	1	Idler Gear w/ E-10 brushing for EG-1
EC-6H	1	Idler Gear w/ E-10 brushing for EC-H
EC-21	1	Strainer screen
568-118	1	Top O-ring
6227-17	1	Bottom o-ring
E-20ASSY	1	Bypass valve cartridge (with o-rings)
E-1	1	Main housing for EG-1
E-1H	1	Main housing for EC-H
E-9	1	Idler Gear Shaft
105CUP	1	Leak detection port with bleeder cup
E-100	1	Shaft Seal Assembly for EG-1
E100[H	1	Shaft Seal Assembly for EC-H
E-15	1	Bearing Retainer Plate
10-32Tx1/2L	8	Fillister Head Screws for Bearing Retainer Plate
VC-20	1	Complete Drive Coupling (electric motor use) EG-1**
VC-30	1	Complete Drive Coupling (electric motor use) EC-H**
FD-20	1	Coupling Insert for EG-1
FD-30	1	Coupling Insert for EC-H
CG-E	1	Optional-Coupling Guard Screen
E-3	4	Mounting Spacers with Studs
E-52	1	Optional - Foot Mounting Bracket
R3-21	4	Spacers for Optional Foot Mount Bracket
5/16-24Tx1L	4	Gr.5 Cap Screws for Mounting Spacers
—	4	Threaded Holes for E-3 Mounting Spacers
E-51	1	Engine Adapter Plate



CYLINDERS AND STORAGE CABINETS

10 LB. Aluminum Vertical & Horizontal

9058TC.2

(vertical)

9059TC.1

(horizontal)

OPD/QCC



20 LB. White Cylinder

MSCP-10518IND

OPD/QCC

Zinc Metalized

Steel

Rust

Resistant

Vacuum

Purged



30 LB. White Cylinder

MSCP-1170IND

OPD/QCC

Zinc Metalized

Steel

Rust Resistant

Vacuum Purged



40 LB. White Cylinder

MSCP-1270IND

OPD/QCC

Zinc Metalized

Steel

Rust Resistant

Vacuum Purged



33 LB. Aluminum MSCP-1815UAL

Inspected & vacuum pre-purged

Lifetime Warranty on liquid withdrawal tubes

Relief valve with a clear path to the outside of the cylinder.



33 LB. Aluminum* 9367

Mower cylinder
Vapor withdrawal
Fuel efficient
& Green

*Other Sizes Available



33 LB. Steel Cylinder

MSCP-15580VGZ

Forklift cylinder

Gauge and fill valve 7141M

Code 12





**100 LB. ASME
Cylinder**

68143

Vacuum Purged
Plastic
Lids



**100 LB. Gray
Cylinder**

MSCP-1836VGZ

Multivalve
Zinc Metalized
Steel
Rust Resistant



**100 LB. Gray
Cylinder**

MSCP-1828VGZ

POL Valve
Zinc Metalized



420 LB. ASME Cylinder

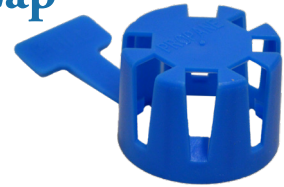
6762.8

Vacuum Purged
Plastic Lids



Protective Cap

PPC3B
For QCC1



POL Plug

737-5
Sold in quantity of 100
per bag.



Dust Cap

DC-QCC1



Tank Cradles*

TC-1-A

120 gal. to 350 gal. tanks need 1 strap and 2 anchors. 351 gal. tanks to 1500 gal. tanks require 2 straps and 4 anchors.



*For the safe transportation of propane tanks.



CYLINDERS AND STORAGE CABINETS

20 LB. Cylinder Storage Cabinets

Powder coated white. Other colors available. Includes 3 safety decals and a place for a safety placard (placard not included).



Part Number	Number of Cylinders	Depth	Width	Height
X-12	12	27"	43"	50"
X-16	16	27"	60"	50"
X-18	18	27"	43"	72"
X-24	24	27"	60"	72"
X-24L	24*	27"	85"	50"
X-36	36	39"	50"	72"

*Low Profile

These heavy duty Gas Cylinder Cabinets are designed for outdoor storage using heavy gauge construction. If you're looking to keep your gas cylinders safe, choose either the X or M Series cabinets to store your tanks.

Features:

- Lockable T-handle plus hasp for padlock
- Tapered front shelf for easy cylinder placement
- Heavy duty tubular hinge welded to frame and door

33 LB. Cylinder Storage Cabinets

Painted safety yellow - rust inhibitor and includes 3 safety decals.



Part Number	Number of Cylinders	Depth	Width	Height
M-4	4	37"	30"	40"
M-6	6	37"	30"	55"
M-8	8	37"	30"	70"
M-12	12	37"	43"	70"
M-16	16	37"	60"	70"
M-24	24	37"	85"	70"

Construction:

- All welded construction. No nuts and bolts to come loose.
- 1 1/2" angle frame
- 1" angle shelves
- 16 gauge steel roof
- 16 gauge expanded metal sides and doors

CATHODIC PROTECTION

Anode Test Kit

ATK-2

The anode test kit meets the requirements of NF-PA58's new standard for Cathodic Protection.

Anode test includes: meter, instructions, half-cell, 12-foot lead with hippo clip, set of red & black adapters, and case.



Download Cathodic Protection Record Sheet at tarantin.com/downloads/Cathodic-Protection-Recording-Sheet.pdf

Bracket Mounting Adapter

16285

Optional accessory item

for the anode test kit (ATK-2). For use with telescoping extension pole (16281).



Magnesium Anode Bag

MG-5LB, MG-9LB, MG-17LB

5, 9, and 17 lb. anode with 10 ft. X #12 gauge electrical lead attached. Bagged and boxed for shipping protection.



Riser Pipe Clamp

RPC.1

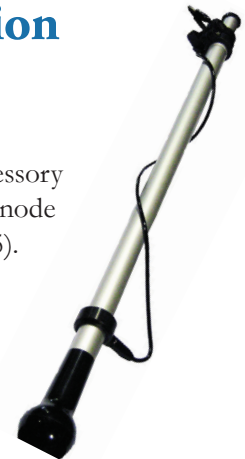
Retrofit anode connection for existing or new underground tanks.



Telescoping Extension Pole

16281

Optional accessory item for the anode test kit (16285).



Copper Sulfate Crystals 12 oz.

16906

Optional accessory item for the anode test kit.



Copper Sulfate Crystals 1 lb. 3 oz.

T&R50300



Copper Sulfate Anti-Freeze

17105

Optional accessory item for the anode test kit.



MOST PRICING CAN BE FOUND AT WWW.TARANTIN.COM



Replacement Dials



5-1951



5-01852



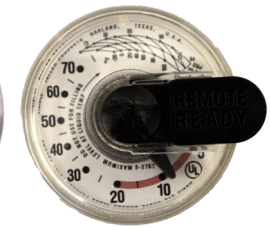
5-01813



3181-01749



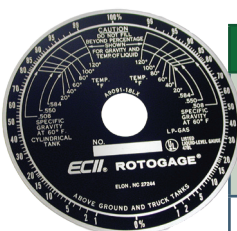
2733U-CV



2701AGTM

Part No	Tank	Remote Ready	Setting	Type	Guide Hole	Reads
5-01813	Underground Horizontal	Yes	2 Screw	JR	-	5% - 95%
2700CV	Underground Horizontal	No	Drop In	JR	94%	5% - 94%
130024	Underground Horizontal	Yes	Drop In	JR	10%	5% - 94%
2701AGTM	Aboveground Horizontal	Yes	Drop In	JR	5%	5% - 94%
2701CV	Aboveground Horizontal	No	Drop In	JR	5%	5% - 94%
5-01749	Aboveground Horizontal	Yes	2 Screw	JR	-	5% - 95%
5-00001	Aboveground Horizontal	No	2 Screw	SR	-	5% - 95%
5-01835	420# Vertical	Yes	2 Screw	JR	-	10% - 80%
5-1951	420# Vertical	Yes	Snap	JR	-	10% - 80%
2765CVLP	420# Vertical	No	Drop In	JR	80%	10% - 80%
5-00435	420# Vertical	Yes	2 Screw	SR	-	10% - 80%
130039	200# Vertical	Yes	Drop In	JR	5%	5% - 85%
5-01852	200# Vertical	No	2 Screw	JR	-	5% - 85%
2722CU	200# Vertical	No	Drop In	JR	85%	5% - 85%
G13088	100# Vertical	No	Snap On	JR	-	10% - 80%
5714S02591	Forklift Cylinders	No	Snap On	JR	-	E-1/4-1/2-F
2733U-CV	Forklift Cylinders	No	Drop In	JR	7%	H=13%-40% V=7%-20%
5-01789	Forklift Cylinders	No	2 Screw	JR	-	E-1/4-1/2-3/4-F
5343S01992	Forklift Cylinders	No	2 Screw	JR	-	H=1/8-1/4-3/8 V=1/8-1/4-3/8
3181-01749	Universal Dials	No	Drop In	JR	-	5% - 95%
3180-17001	Universal Dials	No	2 Screw	SR	-	5% - 95%

RegO Rotogages



For Tanks	Gauge	Tube	Dial
80-99"	A9094TS	A9091-60.0	A9091-18LX
80-99"	A9094RS	A9091-60.0	A9091-18LX
100-147"	A9095TS	A9091-72.0	A9091-18LX
100-147"	A9095RS	A9091-72.0	A9091-18LX

RegO Rotogage Replacement Parts

Part No.	Description
A 3163-6	Stem Assembly
2092-13	Packing (2-Required)
8092-15	Packing Gland Nut
A9091-61T	Body Bushing (2 Required)
A9091-18LX	Dial (LP Only)

Usable in all gauges except those beginning with a part number of TA



Steel Case Pressure Gauges

2" industry standard single scale dial PSI ranges, steel painted black enamel bezel and case, clear glass lens, brass movement, phosphor or bronze bourdon tube
1/8" NPT Connection

Part Number	Range	Gauge
MSCP-SG2-15 1/8	0-15	PSI

Bottom Mounted 2" x 1/4" Bottom Connection

Part Number	Range	Gauge
MSCP-SG2-15	0-15	PSI
MSCP-SG2-30	0-30	PSI
MSCP-SG2-60	0-60	PSI
MSCP-SG2-100	0-100	PSI
MSCP-SG2-200	0-200	PSI
MSCP-SG2-300	0-300	PSI
MSCP-SG2-400	0-400	PSI

Back Mounted 2" x 1/4" Back Connection

Part Number	Range	Gauge
MSCP-SGC2-15	0-15	PSI
MSCP-SGC2-30	0-30	PSI
MSCP-SGC2-60	0-60	PSI
MSCP-SGC2-100	0-100	PSI
MSCP-SGC2-200	0-200	PSI
MSCP-SGC2-300	0-300	PSI
MSCP-SGC2-400	0-400	PSI



Brass Case Pressure Gauges

2" single scale dial, PSI Ranges, glossy brass case with screw-on bezel, clear glass lens, brass movement, phosphor or bronze bourdon tube
1/8" NPT Connection

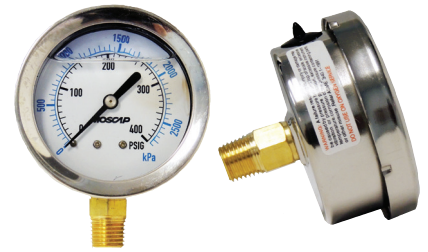
Part Number	Range	Gauge
MSCP-BG2-300 1/8	0-300	PSI

Bottom Mounted 2" x 1/4" Bottom Connection

Part Number	Range	Gauge
MSCP-BG2-30	0-30	PSI
MSCP-BG2-60	0-60	PSI
MSCP-BG2-100	0-100	PSI
MSCP-BG2-300	0-300	PSI
MSCP-BG2-400	0-400	PSI

Back Mounted 2" x 1/4" Back Connection

Part Number	Range	Gauge
MSCP-BGC2-15	0-15	PSI
MSCP-BGC2-30	0-30	PSI
MSCP-BGC2-60	0-60	PSI
MSCP-BGC2-100	0-100	PSI
MSCP-BGC2-300	0-300	PSI
MSCP-BGC2-400	0-400	PSI



Liquid Filled Gauges

Glycerin liquid filled, stainless steel case, industry standard PSI/KPA dual scale readings, 2 1/2" dial range
Bottom Mounted 2 1/2" x 1/4" Bottom Connection

Bottom Mounted 2 1/2" x 1/4" Bottom Connection

Part Number	Range	Gauge
MSCP-SGL2.5-30	0-30	PSI
MSCP-SGL2.5-300	0-300	PSI
MSCP-SGL2.5-400	0-400	PSI

Back Mounted 2 1/2" x 1/4" Back Connection

Part Number	Range	Gauge
MSCP-SGCL2.5-300	0-300	PSI
MSCP-SGCL2.5-400	0-400	PSI

Steel Case Pressure Gauges 4 1/4"

Standard single scale dial with PSI ranges, steel black case, phosphor or bronze bourdon tube
Test Assembly Block



Test Assembly Block

Part Number	Range	Gauge
MSCP-SG4.5-300	0-300	PSI
MSCP-SG4.5-400	0-400	PSI

PT9102 Series Service Valves

PT9102D11.1
PT9102D11.7

For vapor withdrawal service on DOT and ASME containers. They have an integral pressure relief valve and may only be used as an accessory valve on containers that have an independent pressure relief valve sufficient for that container's capacity.

- 3/4" M. NPT
- Service Connection F. POL CGA 510
- Fixed Liquid Level Vent Valve: Yes
- Approx. Filling Rate Liquid Flow GPM: Pressure drop across valve
- 10 PSIG: 7.6 | 25 PSIG: 11.7 | 50 PSIG: 15.2 | 100 PSIG: 20.6



Presto-Tap Gauges

6800
300 PSI Gauge

6800-B90

300 PSI Gauge with Bleeder Valve

PT-30LP

30 PSI Gauge with Bleeder Valve 90

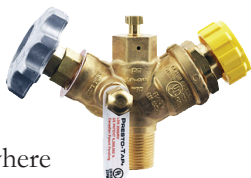
Patented, liquid filled or dry 30 PSI/ ambient temperature gauge. The inner red dial is the temperature reading that should closely correspond to the pressure reading (outer black dial) if liquid is in tank. Quick adapter provides access to the Presto-Tap valve without tools. Cloth belt-loop holster is included. Also available with 10" hose to easily accommodate underground tanks.



PT7556R Multivalve

PT7556RS12.0

Suited for vapor withdrawal of ASME containers where compact groups of components are necessary. Separate filler valves and pressure relief valves are required.



Presto Tap Universal Service Tech Kit

This diagnostic and leak tech kit includes a 6800 kg gauge, a PT-30 kg gauge, PT-5 kg gauge, PT-OZ, MHA-Straight, universal flex hose, 3/16 allen key, RV, and bag.

Pigtails with Presto-Tap

PT912JS12
12" POL 1/4" M. NPT

PT912JS20
20" POL x
1/4" MPT



Pressure Tap with Block

MSCP-TRV-BLOCK

M.POL x F.POL high pressure test block (between tank and regulator).



Test Adapter

MSCP-TRV

UL listed 1/8" M. NPT Regulator Valve for tank pressure and regulator tap location. Tank pressure, first stage and 11" w.c. locations. MSCP-TRV provides access for test instruments, either attached or by means of a hose barb.



TOOLS AND ACCESSORIES

Emergency Response Kit

ERK-1

A complete package in a special toolbox that improves your ability to respond to propane emergencies. It is recommended for placement with key personnel in your company so that emergency response time can be kept to a minimum.



High Pressure Test Block

2962

Test block M. POL x F. POL. 0-300 PSI gauge and bleeder.



High Pressure Test Kit

HPTK-2



Provides for easy and accurate high pressure tests that conforms with gas check procedures.

High Pressure Test Assembly

For air testing of piping systems includes brass test block, 3/4" Female pipe, air valve, and cap and a high pressure gauge.

Part Number	Range	Gauge
MSCP-HPTA-5	0-5	PSI
MSCP-HPTA-30	0-30	PSI
MSCP-HPTA-60	0-60	PSI
MSCP-HPTA-100	0-100	PSI



Low Pressure Test Kit

MSCP-LPTK

Includes pressure gauge, case, and 30" rubber tubing with bell end.



White Teflon Tape

ZT13

3/4" x 520" Roll
Standard Density

TT61

3/4" x 520" Roll
Standard Density

TT54

3/4" x 520" Roll
Medium Density



Yellow Tape

YT71

520" x 1/2" Roll

YT75

520" x 1" Roll

Wood Safety Plugs

WP3/4X12

3/4" x 12"

WP1-1/2X12

1 1/2" x 12"

WP2-1/2X12

2 1/2" x 12"

WP3-1/2X24

3 1/2" x 24"

WP4-1/2X24

4 1/2" x 24"

WP HOLDER

For 3/4" - 1 1/2" & 2 1/2" - Truck

In the event of a valve being sheared off, hammering in a wood safety plug will allow you to remove the tank to safe area.



Steel-Guard Paint



B54W151-1G
Tank, solar white,
1 Gal.
B54W151-5G
Tank, solar white,
5 Gal.

B50W24-1G

Kem bond white primer, 1 Gal.

B50W24-5G

Kem bond white primer, 5 Gal.

B71S200-1G

Bondplex, 1 Gal.

B71S200-5G

Bondplex, 5 Gal.

8538-1G

Silver gray, 1 Gal.

8538-5G

Silver gray, 5 Gal.

353-8-1G

Tarlon Mastic bottom guard for
cylinders, 1 Gal.

Roskote R28 UG Tank Coating/ Mastic

R28-1 R28-5
1 Gal. 5 Gal.

NO. 11-1G

Thinner for use
with 1 Gal. of mastic

For use on underground tanks.

1 Gal. will coat an entire 1,000 Gal. tank



Brushes

603-2

603-3

603-4



Bucket

Grid

BG-1
For 5 gallon
pail



The Original Saf-T-Lok

510 Lock
510-K Key

1 key per box of 12
locks. Key can be sold
separately.

Part Number	Description
510	POL-LOCK
510-K	POL-LOCK KEY

Locks

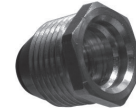
The easy to install 510
Saf-T-Lok securely locks
POL service valves to
prevent unauthorized
hookups, reduce pilferage, and secures tanks after
“out of gas” calls. Provides an effective credit control.



B531G



S502K-C-BLUE



B827P-A0



S533G-LLVC-A0

Part Number	Description
B531G+B827P-A0	POL Lock complete with lock and plug for LP outlet valve keyed alike (key not included)
S502K-C-BLUE	Key (when ordered with lock order) cut for each company
S533G-LLVC-A0	1 3/4" ACME valve cap lock with brass cap and slip ring with lock keyed alike (key not included)

Breakaway Locks

500BRK

Hidden breakaway feature allows fire
department or emergency response personnel
access to valves, plant gates, etc. Lock shackle breaks
away when struck with a hammer or chisel. Keyed alike.



Locking Caps



MSCP-MLC-1

2 1/4" inside diam-
eter, 1 1/2" bottom
opening, 1 1/8"
height, filler valve
type

MSCP-MLC-S4

2 1/2" diameter, 1 3/8"
bottom opening, 1" height,
100lb. valve type: Encloses
ACME thread or handwheel
on valve to prevent tampering.



Roller Frame & Roller

7411
7312-9

Paint Tray & Liner

7645



TOOLS AND ACCESSORIES

Hydrex Gloves

11-435-10 (LG)

Stay Cool in any work environment with Hydrex® nitrile exam gloves. Hydrex® inner coating helps absorb moisture and keeps you cool during extended wear. These gloves give you cut protection and are suitable in work environments where there is possible contact with bodily fluids, microorganisms, and chemicals.



Edmont Raised Finish Monkey Grip Glove

23-173

Raised finish provides excellent grip for easier, safer handling of wet and dry materials. Tough vinyl coating resists chemicals and abrasion. Comfortable non-woven lining to keep wetness on the outside and dryness on the inside.



Leather Palm Glove

NO.1

Packed 12 pairs per case
General duty protective leather glove. Tuff stretch design. One size fits all.



Disposable Gloves

93-250

Extra Large. 100 Gloves in a box.
10 Boxes in a carton. Black and Powder free.



Sherlock 5-Second Leak Detector

300-L32

1 Pint Empty Brush Top

800-LS3

1 Pint Empty Spray Bottle

800-LS5

1 Gallon Low Temp Jug

Pressurized gas systems. Ultra-sensitive to low pressure, minute leaks. Retains bubbles; bubble size indicates leak rate. Safe for use on polyethylene pipe fittings as outlined in ASTM test D-1693. Service temperature range: -10 ° F to 160 ° F. Wettable: fluid stays on metal longer, it can be used on vertical surfaces.



pictured in order of listing

Safety Treads/Ice Cleats

SGT-1

Size 8-11 Spiked

SGT-2

Size 11-13 Spiked

SS-2XL

Size 13+ All Purpose

SGC-1M

Size 5-9 Coiled

SGC-2L

Size 9-12 Coiled

SGC-3XL

Size 12+ Coiled



SGC pictured
Strap onto your work boot for sure footing on any surface. Easy-on tough rubber material.

Bee Bopper

Beebop-Case

Wasp and Hornet spray 12 - 14 oz. cans per case



Halt! Dog Repellent

Halt-Case

12 - 1 1/2 oz. cans per case. Complete with belt clip.



Storage Tank Thermometers



The 2-inch diameter dial is calibrated - 40° to 120° F. and - 40° to 50°C. The thermometers are dust-proof and moisture-proof.

Type Number	Container Connection	Stem Length
MSCP-SSBT-3-4	1/2" MNPT	4"
MSCP-SSBT-3-6	1/2" MNPT	6"

Strainers

Protects your pump and meter from foreign material. Ductile iron body with stainless steel 40 mesh screen. Replacement screens and other mesh sizes are available.



Part Number	Size
N260-02	1/4" FPT
N260-04	1/2" FPT
N260-06	3/4" FPT
N260-08	1" FPT
N260-10	1-1/4" FPT
N260-12	1-1/2" FPT

Part Number	Size
N260-16	2" FPT
N260-16F	2" Flange
N260-24	3" FPT
N260-24F	3" Flange
N260-32F	4" Flange

Fire Extinguishers



Multi-Purpose Dry Chemical ABC Stored Pressure Fire Extinguishers - For Use On All Bobtails And Transports

- Multi-Purpose
- Dry Chemical
- ABC Rated
- All Steel

Part Number	Description	Rating
417T	2.5 lb Fire Extinguisher with bracket	1A;10BC
500	5 lb. Fire Extinguisher with bracket	2A;10BC
441	10 lb. Fire Extinguisher	4A;60BC
423	20 lb. Fire Extinguisher	20A;120BC
XTG-8	Cover - 20 lb. Extinguisher	
809	10 lb. Running Board Bracket	
810	20 lb. Running Board Bracket	
DT-102	Inspection Tag	
MS-8	8" Tag Seal	
P-138	Fire Extinguisher Sign, 12" x 4", White Arrow with Red Letters, Plastic	
V-138	Fire Extinguisher Sign, 12" x 4", White Arrow with Red Letters, Vinyl	



HOSE ASSEMBLIES AND ACCESSORIES

Hose Assemblies

Comes with quick disconnect



Part Number	Length	Diameter	Connection	Max PSI
556#1791	12 feet	1/2"	1/2" F. Flare	1/2 PSI (vapor only)
556#1793	12 feet	3/8"	3/8" F. Flare	1/2 PSI (vapor only)

Replacement Hose and Regulators

Part Number	Length	Connection
150-I5LTC24GRQC	24"	3/8" F. Flare x FQCC
150-I5LTC36GRQC	36"	3/8" F. Flare x FQCC
150-I5LTC60GRQC	60"	3/8" F. Flare x FQCC



UL and CSA Listed Hose Assemblies

Thermoplastic hose assemblies are available in 1/4" and 3/8" ID sizes only. The hose has a working pressure of 350 PSI with a 1750 PSI burst rating. All assemblies up to 60 inches in length are dual (UL and CSA) listed.



Part Number	Length	Connection	Diameter
42413-120	120"	3/8" F. Flare x 3/8" F. Flare	1/4"
42610-48	48"	3/8" M. MPT x 3/8" F. Flare	3/8"
42613-60	60"	3/8" F. Flare x 3/8" F. Flare	3/8"
42613-120	120"	3/8" F. Flare x 3/8" F. Flare	3/8"

Adapter Hoses

The 40407 adapter hose has a safe, convenient, and user friendly design that makes it ideal for hooking up portable and high pressure appliances such as camp stoves, lanterns, and table top grills to large cylinders.



Part Number	Length	Connection	Diameter
40407-48	48"	1"-20m x POL	1/4"
40407-60	60"	1"-20m x POL	1/4"
40402-24	24"	1/4" INVFL x POL	1/4"
40402-48	48"	1/4" INVFL x POL	1/4"

Hose End Swivels

Part Number	Inlet-Outlet	Description	Make
JO-1	1" M. NPT	Swivel connector	Full Circle





Rego Quick Acting, Minimum Loss Hose End Valves for Bobtails & Dispensing Stations

Loss at disconnect is now less than 2CC. Designed to vastly reduce the amount of product vented when disconnecting bobtail delivery trucks, dispensing systems, and anhydrous ammonia nurse tanks.

Part Number	Inlet Connection (F. NPT)	Outlet Connection (F. ACME)	Locking Handle	Flow at 1 PSIG (CV) Pressure Drop* (GPM/Propane)
A7793A	3/4"	1 3/4"	yes	16.0
A7797A	1"	1 3/4"	yes	16.0

Parker Bobtail

- Textured Covered and tested
- MPT Ends

LPH-1INX125P-T
1 inch x 125 feet

LPH-1INX150P-T
1 inch x 150 feet



Fairview Bobtail

- Smooth covered and tested
- MPT Ends

I16C1500MP16MP16
1 inch x 125 feet

I16C1800MP16MP16
1 inch x 150 feet



Industrial Hose Sales & Engineering Bobtail

- Certification to -65
- Boxed

LPH-1INX150P-IH
1 inch x 150 feet



RegO Plug, Chain & Ring

Part No.	Chain & Ring	Material	M. ACME
C5763N	Yes	Nylon	1 1/4"
C5765N	Yes	Nylon	1 3/4"
5765PR	No	Brass	1 3/4"

Part No.	Chain & Ring	Material	M. ACME
C5767N	Yes	Nylon	2 1/4"
C5769N	Yes	Nylon	3 1/4"
3705RC	Yes	Brass	M.POL

A plug to protect hose end on bulk plants and delivery hose.



L.P. Gas Hose with Crimped Hose Couplings

Crimped and Tested These hoses have mechanically pressed-on ends, and the entire assembly is tested to meet current DOT standards.



We can make any hose size.

Part Number	Hose Size	Length
LPH-3/4X100P	3/4"	100'
LPH-3/4X125P	3/4"	125'
LPH-3/4X150P	3/4"	150'
LPH-1X100P	1"	100'
LPH-1X125P	1"	125'
LPH-1X150P	1"	150'

SIGNS AND DECALS

White Vinyl Warning

AA-16

Printed red and black,
Min. order of 100

LIQUEFIED
PETROLEUM
GAS
UN1075



White Vinyl Custom Company Name

A-16

Printed red & black.
Minimum order of 3,500



Propane Fill

M-97A

2' x 4', Single Face

M-97A-D

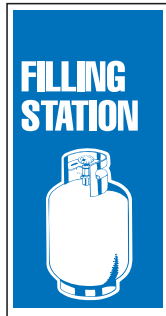
2' x 4', Double Face

M-97B

3' x 6', Single Face

M-97-BD

3' x 6', Double Face



Propane Exchange Single Face

M-93AX

2' x 4'

LP Gas Vinyl

V-1075



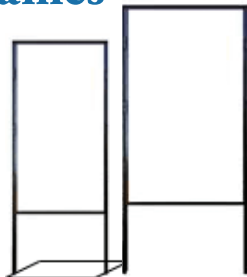
Sign Frames

SF-1

2' x 4', Frame ground style

M-97A-D

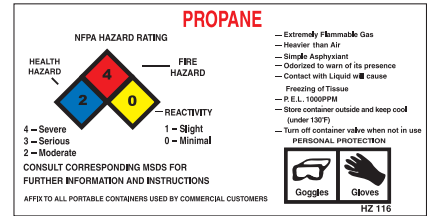
2' x 4', Frame floor style comes with hardware



NFPA Hazard Rating

HZ-116 or HZ-116-GHS

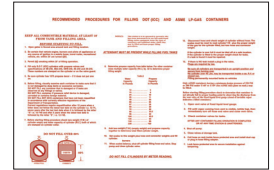
2 1/2" x 5", Printed blue, yellow, black, and red



Recommended Procedures for Filling

V-206: 14" x 21 1/4", White printed Red

P-206: 14" x 21 1/4", Blue printed Red



No Smoking

V-23BB

22" x 4",
Printed Red

NO SMOKING

Propane

V-28BB

14" x 4",
Printed Red

PROPANE

Sign Kit

SIGN KIT

S35483- OPD Poster

NFPA-704B - Warning Decal

V-28C - Propane Sign

V-17B - Flammable Sign

V-23C - No Smoking Sign

V-206 - Filling Procedures

DOT Cylinder Label Warning



CS33 2 1/2" x 5 1/2", White vinyl printed in Red, Blue, & Black

CS-33-GHS 2 1/2" x 5 1/2"

Custom printed with customer's name, address, and phone number

No Smoking

V-26B

12" x 18",
Printed Red

**NO SMOKING
OR OPEN FLAMES
WITHIN 50 FEET**

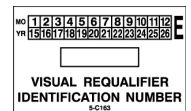
M-26B

12" x 18", Metal printed Red

Custom Punch Card

5-C163-BLANK

Available as custom print with customer's RIN number



White Vinyl Bilingual Warning



AA-16-BI

Printed red and black. Minimum order of 100.

Metal Gate Sign

M632 27" x 5"

Printed Red

**ALL GATES MUST BE
OPEN BEFORE FILLING**

Never Store Decal

DECAL - NEVER STORE INDOORS

5" x 1.25"



Renaldo Tank Carrier

EZTC717

Hydro Drive

Motorized

For Any Size ASME Tank

up to 1,000 Gallons



Renaldo Motorized Dolly

RTC420NG3

Gear Drive

3 Speed Honda Engine

Up to 420#



Renaldo Muscleman Hand Truck

RTC420M2

Manual

Split Handle



Renaldo Hand Truck

RTC33-SCOOP

For 33# Cylinders

Top Stacking



Hand Truck

HT7-900-4P

Up to 420# Cylinders





FITTINGS

Schedule 80 Forged Steel Fittings – Screwed



45° Elbow



90° Elbow



Cross



Tee



Union



Hex Head Plug



Caps



Couplings

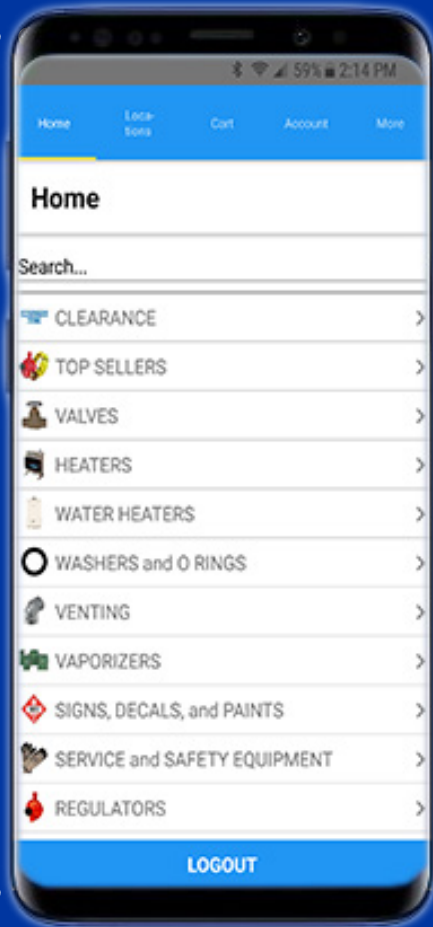
Item	Pressure	1/4"	3/8"	1/2"	3/4"	1"
90° Elbow	2000#	611070	611071	611014	611019	611024
45° Elbow	2000#	611104	611079	611115	611080	611081
Tees	2000#	611168	611169	611170	611171	611173
Crosses	2000#	611510	611511	611512	611516	611524
90° Street Elbow	3000#	611160	611159	611162	611163	611164
Couplings	3000#	600105	600110	600115	600120	600125
Hex Head Plugs	3000#	600505	600510	600515	600520	600525
Unions	3000#	660105	660110	660115	660120	660125
Caps	3000#	600005	600010	600015	600020	600025

Item	Pressure	1-1/4"	1-1/2"	2"	2-1/2"	3"
90° Elbow	2000#	611029	611034	611039	611044	611049
45° Elbow	2000#	611129	611134	611139	611141	611145
Tees	2000#	611174	611176	611175	611177	611180
Crosses	2000#	611531	611532	611533	611534	611535
90° Street Elbow	3000#	611165	611166	611167	611158	611157
Couplings	3000#	60130	600135	600140	600145	600150
Hex Head Plugs	3000#	600530	600535	600540	600545	600550
Unions	3000#	660130	660135	660140	660145	660150
Caps	3000#	600030	600035	600040	600045	600050

MOST PRICING CAN BE FOUND AT WWW.TARANTIN.COM

Tarantin App

INDUSTRIES, INC.



Ease of Ordering

Order parts In the field, in your warehouse, or anywhere! The app is tied into our parts database. **If you can find it on our website you can find it in our app.**

Warehouse Directions

Click on the address of the branch you're picking the parts up from and you're led to Google Maps.

My Account on the Go

Away from your office? Want to see your past orders or invoices? Have all of that information at your fingertips no matter where you are.

Download Our App - Order Wherever You Are



***or search "Tarantin"
GooglePlay or iTunes***

